



Data Storytelling with ConverSight

Empowering Natural Language Interactions





Table of Contents

1. Introduction

- 1.1 What is ConverseSight GPT 02
- 1.2 Key Features 02

2. Understanding ConverseSight GPT

- 2.1 Natural Language Processing (NLP) 03
- 2.2 Large Language Model (LLM) 04
- 2.3 Enhancing customer interactions with ConverseSight GPT 04

3. ConverseSight GPT in Action

- 3.1 Elevating Conversations 05
- 3.2 Story Generation 06
- 3.3 Advanced Platform Guidance with ConverseSight GPT 07
- 3.4 Timeline 07

4. Challenges and Opportunities

- 4.1 Embracing the Conversational Revolution 09
- 4.2 Ensuring Data Privacy 09
- 4.3 Breaking Down Data Silos 09

5. Conclusion

09



1. Introduction

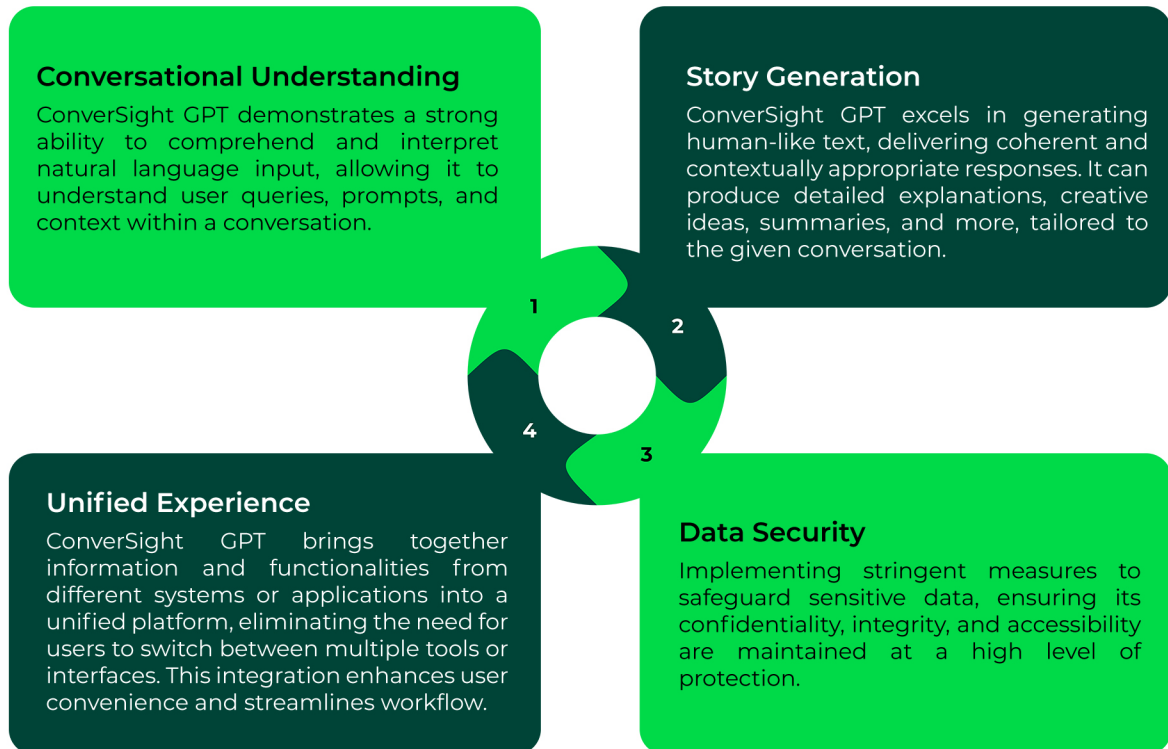
In recent years, Generative Pre-trained Transformers (GPTs) have emerged as a powerful tool for optimizing and revolutionizing the way in which we interact with technology. The emergence of GPT has sparked a revolution in the field of conversational AI. These powerful AI models have garnered immense attention from researchers and the wider population. One such remarkable advancement in this domain is the ConverSight GPT, which leverages the capabilities of API to enable a new level of technical sophistication. By integrating ConverSight GPT, organizations can optimize their operations, enhance decision-making, and achieve unprecedented levels of efficiency.

1.1 What is ConverSight GPT

ConverSight GPT is a powerful storytelling tool that harnesses the potential of your data to craft immersive narratives and actionable insights. It provides enhanced natural language process that's is ConverSight built and patented to deliver an improved response generation, and a more cohesive and streamlined interaction for users. ConverSight GPT effectively addresses data analysis needs, providing practical and efficient solutions. By leveraging the underlying architecture and features of GPT, ConverSight GPT delivers an augmented analysis and unified user experience with the security and agility of an in-house built solution.

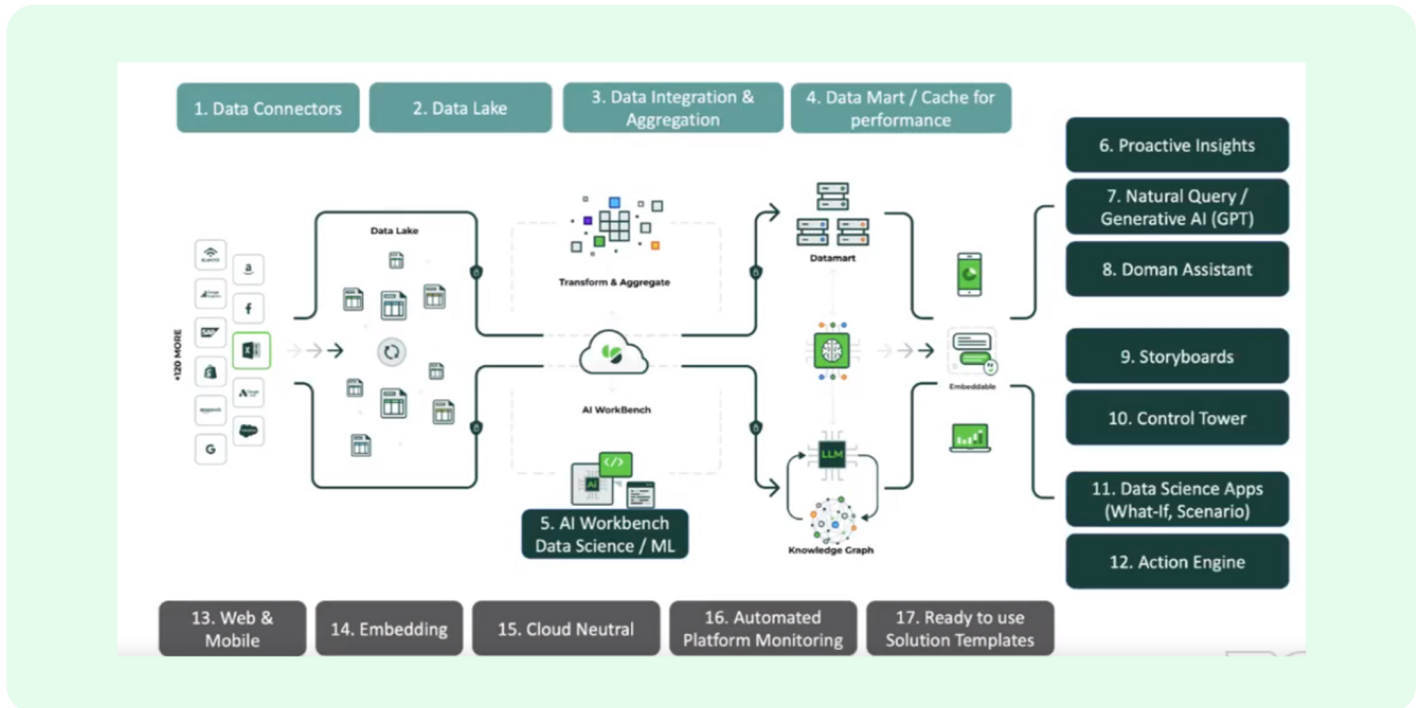
1.2 Key Features

ConverSight GPT empowers organizations to unlock the full potential of their data with its robust features and strong focus on protecting valuable information. Now, let's delve into the key features that make ConverSight GPT a true game-changer in the world of data analytics.



2. Understanding ConverSight GPT

ConverSight GPT recognizes the significance of utilizing a comprehensive range of data sources to pre-train models, ensuring accurate and robust results. Industry public data is leveraged by harnessing publicly available information from diverse industry sources. This enables the models to obtain a broad understanding of the domain and extract valuable insights from the vast amount of accessible public information. By incorporating this data, the models remain up to date with industry trends, best practices, and relevant general knowledge. It delivers highly customized and accurate results by adapting and tailoring itself to the unique needs of organizations.



2.1 Natural Language Processing (NLP)

Natural Language Processing (NLP) is a subfield of artificial intelligence that focuses on the interaction between computers and human language. It involves the ability of machines to understand, interpret, and generate natural language text or speech. NLP enables computers to process, analyze, and derive meaning from human language, allowing them to effectively interact with users and comprehend textual information.

NLP techniques are used to generate text that is fluent, coherent, and contextually appropriate. ConverSight GPT model employs methods like language modeling, which involves predicting the likelihood of words or phrases given the context, and autoregressive decoding, where the model generates text one word at a time based on the preceding context.

2.2 Large Language Model (LLM)

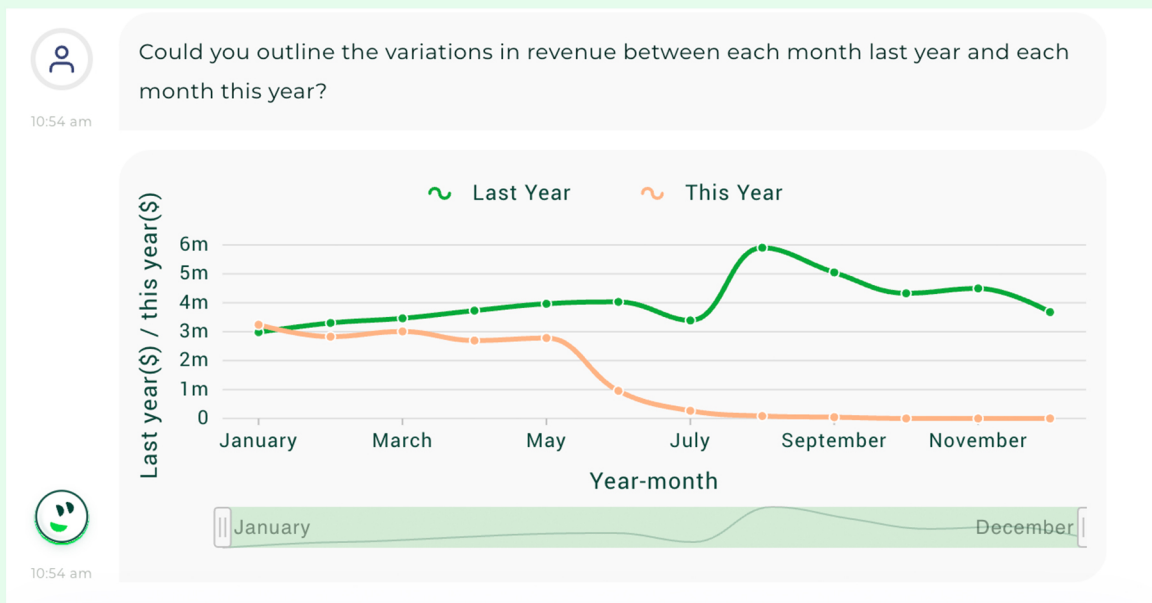
LLMs are proficient in generating human-like text. It can produce coherent and contextually appropriate responses, summaries, explanations, creative writing, and more. This capability makes them highly useful in applications that require natural language generation, such as chatbots, virtual assistants, content creation, and language translation.

ConverSight GPT distinguishes itself with its unique capability of handling and processing private data, guaranteeing the utmost data security and confidentiality. The data can be fine-tuned or specialized for their unique applications, allowing for domain-specific language understanding and generation. This adaptability makes them valuable in various industries and use cases, from customer support and content generation to data analysis and decision-making.

2.3 Enhancing Customer Interactions with ConverSight GPT

ConverSight GPT can retain and utilize context during customer interactions. They remember previous messages or prompts within a conversation, ensuring a seamless flow of dialogue. By considering the conversation history, it provides contextually relevant responses, making the interaction more personalized and meaningful.

The ConverSight GPT is pre-trained on vast amounts of text data from diverse sources, allowing them to possess a broad knowledge base. During customer interactions, it can provide informative answers, offer recommendations, or share insights based on their acquired knowledge. This enhances the customer experience by delivering valuable and accurate information.

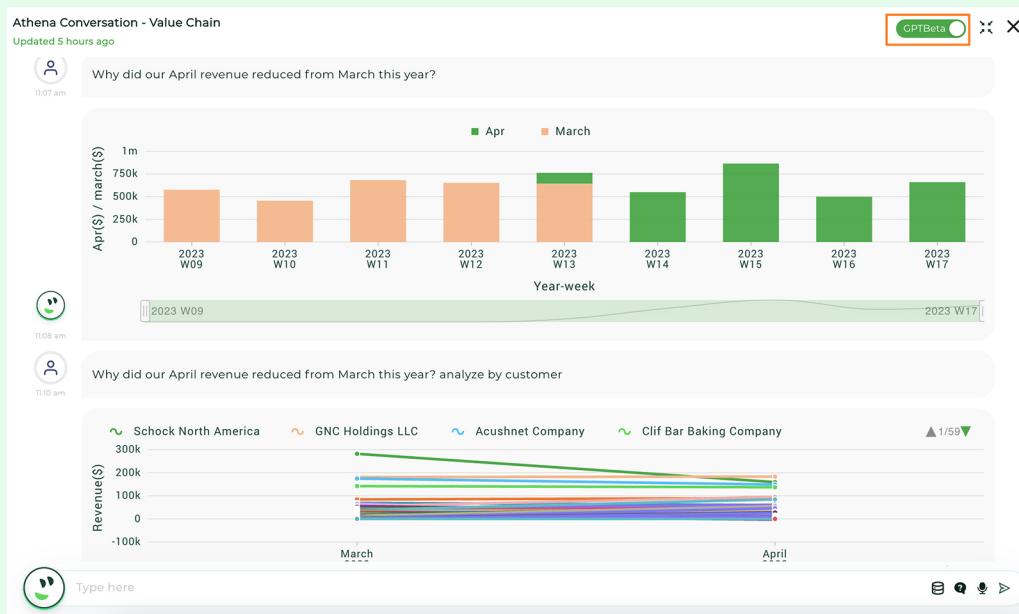


3. ConverSight GPT in Action

Depending on individual's roles, people employ the same technology in different ways to fulfill their respective responsibilities. By harnessing the power of data science and leveraging information from various sources, ConverSight GPT can effectively compare and analyze data, enabling it to provide valuable insights to users. This includes the ability to furnish comprehensive information, aiding the users in making informed decisions and taking appropriate actions.

3.1 Elevating Conversations

ConverSight GPT enriches the conversational experience for users by enabling more natural and free-flowing language interactions. Through its advanced language processing capabilities, ConverSight GPT understands and responds to user queries in a manner that closely resembles human conversation. This enhanced conversational experience fosters better communication, facilitates clearer understanding, and enables users to engage with the system in a more intuitive and seamless manner. The result is a user-friendly interface that promotes efficient and effective information exchange.



Access to ConverSight GPT is made available through the activation of the "GPTBeta" toggle. The toggle serves as a gateway to leverage the capabilities of ConverSight GPT.

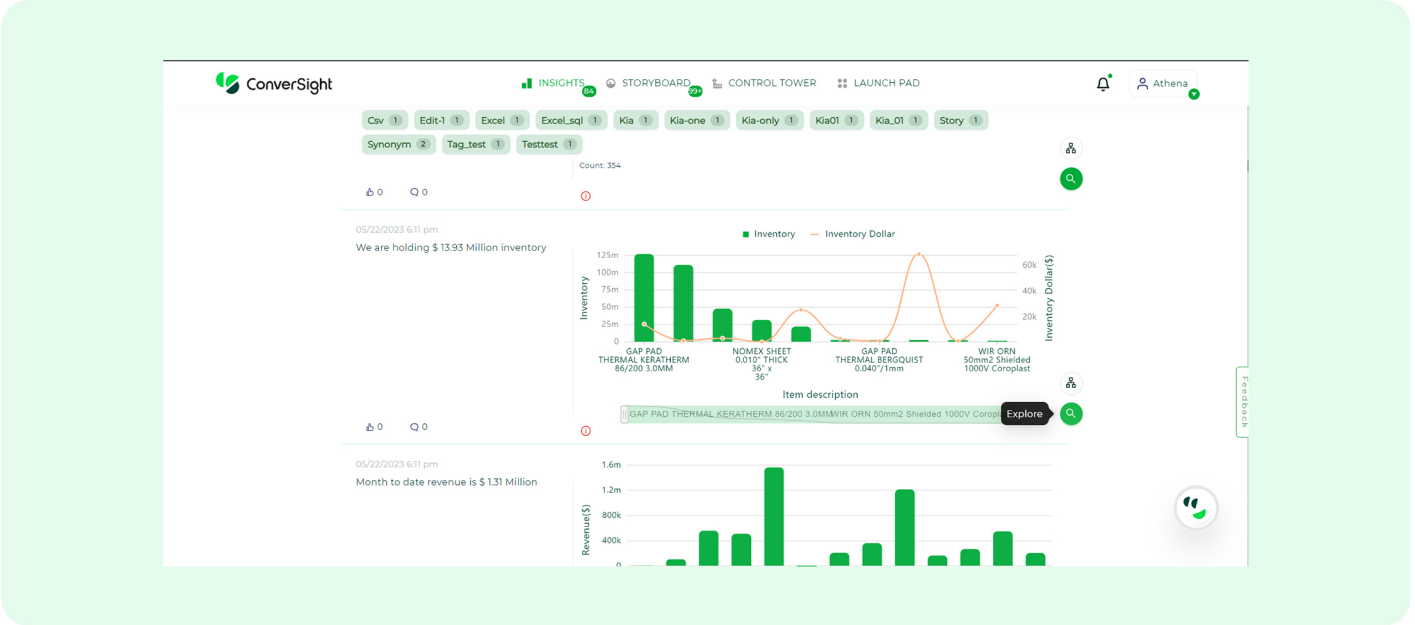


3.2 Story Generation

Story Generation is a powerful capability of ConverSight GPT. With this feature, users can engage in natural language conversation with the system and receive responses in a narrative format. Instead of providing simple answers or information, ConverSight GPT creates detailed and coherent responses that unfold like a story. This storytelling aspect enhances the user experience, making the interaction with the system more intuitive and engaging. By enabling effective communication and information exchange in a conversational manner, ConverSight GPT's Story Generation feature opens new possibilities for immersive and interactive experiences.

To generate stories from your data

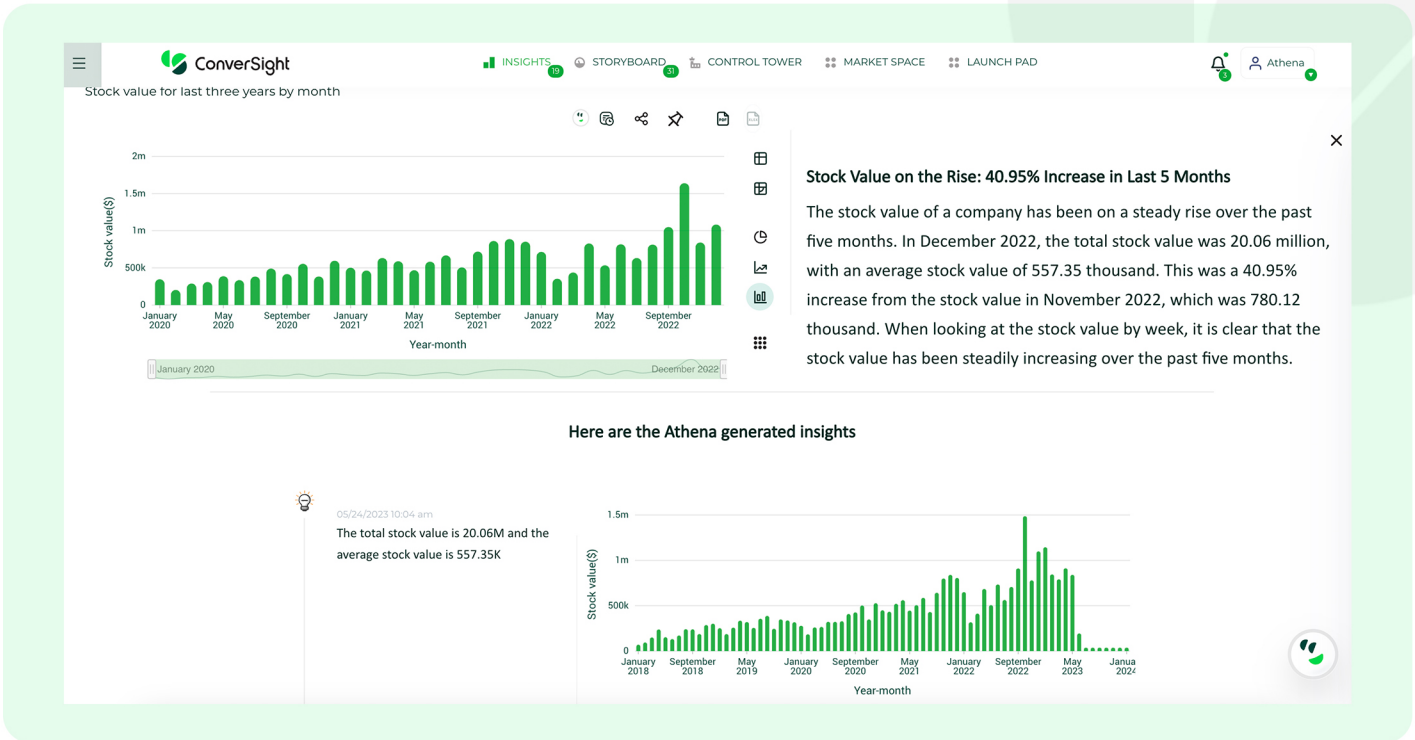
- 1. Click on the "Explore" icon.



- 2. Click on the "Generate AI Story" icon.



The story from your data will be generated as displayed.

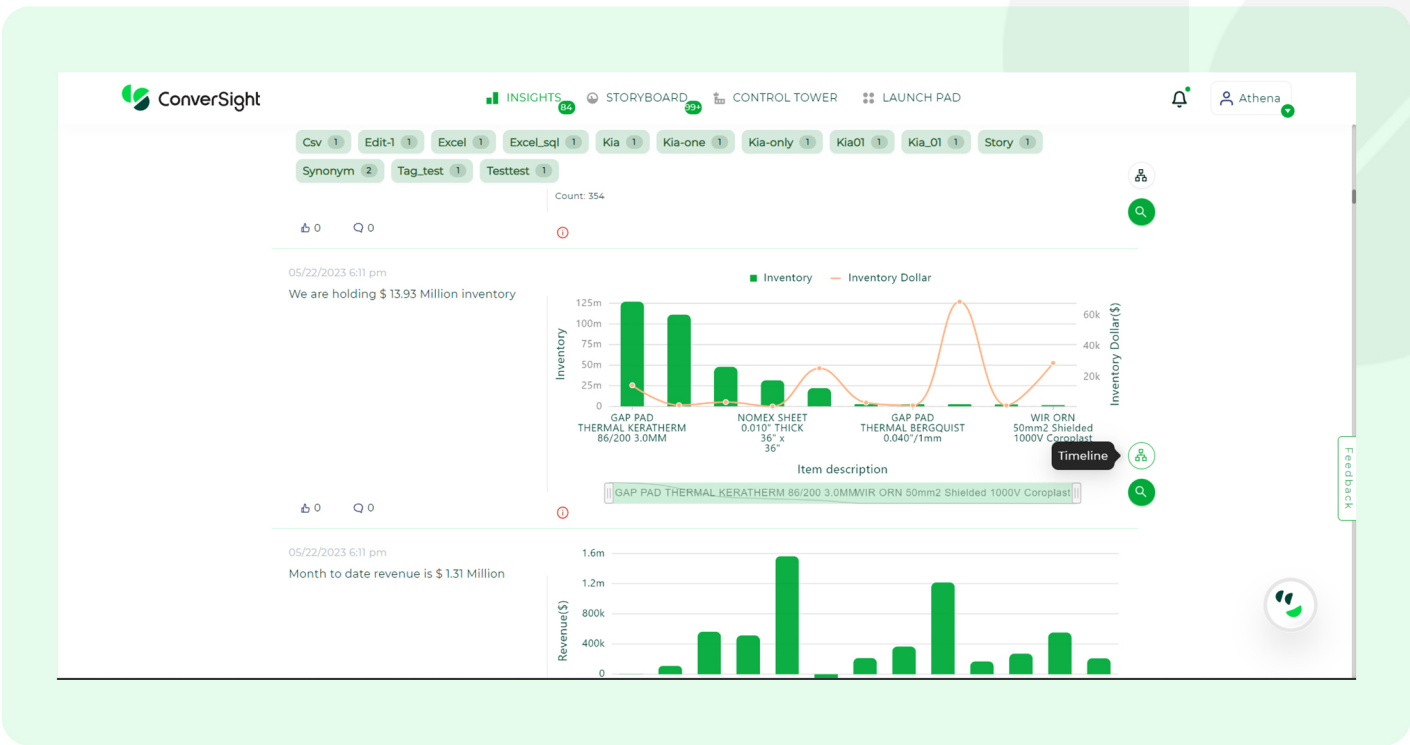


3.3 Advanced Platform Guidance with ConverseSight GPT

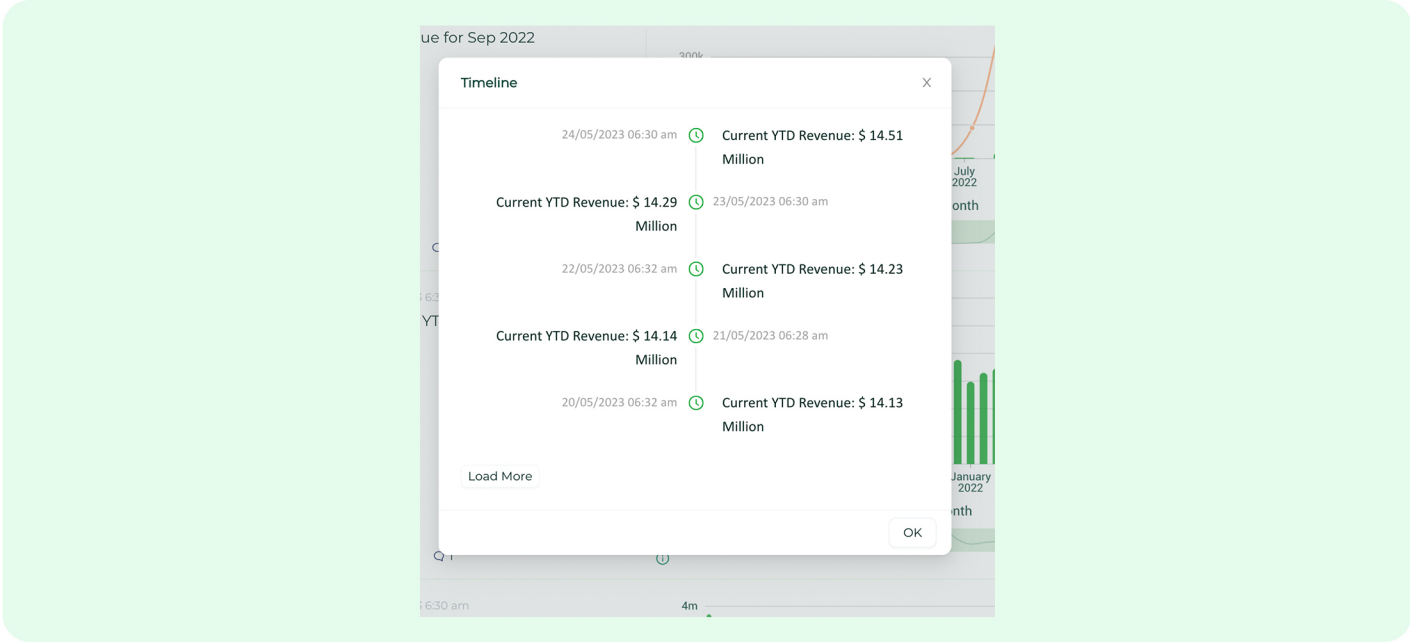
ConverseSight GPT is trained using the comprehensive guide and documentation of the ConverseSight platform, enabling it to provide accurate and informative responses to platform-related queries. Users can confidently ask questions such as "How to create insights?" and ConverseSight GPT will offer detailed guidance and instructions based on its training. This feature enhances the user experience by providing on-demand assistance and facilitating smooth navigation and utilization of the ConverseSight platform.

3.4 Timeline

The timeline feature in ConverseSight GPT empowers users to track and analyze longitudinal data. This functionality allows users to monitor and visualize data points over time, enabling insights into trends, patterns, and changes that occur over a specific period. By leveraging the timeline feature, users can gain a deeper understanding of the progression and evolution of data, facilitating informed decision-making and strategic planning. To access the timeline feature in ConverseSight GPT, simply click on the **"Timeline"** icon within the Insights section.



Timeline will be displayed as shown in the image



4. Challenges and Opportunities

Similar to any other technological innovation, ConverSight GPT is not without its challenges and areas for improvement. However, alongside these pain points, it also offers significant opportunities for further development and enhancement. By recognizing and addressing these challenges while leveraging the potential for innovation, ConverSight GPT can continue to evolve and deliver even greater value to its users.



4.1 Embracing the Conversational Revolution

While many platforms are integrating their applications with ChatGPT to harness the power of AI technology, ConverSight sets itself apart by offering a unique and unified experience. It achieves this by seamlessly integrating data from diverse databases, enabling comprehensive insights and actionable predictions. Unlike other GPTs, ConverSight goes beyond providing information and extends its capabilities to forecasting and predictive prescriptions, empowering users with valuable foresight and guiding them towards optimal decision-making. This distinctive feature enhances the overall functionality and effectiveness of ConverSight, making it an asset in various domains.



4.2 Ensuring Data Privacy

ConverSight GPT effectively utilizes the power of ChatGPT while prioritizing data privacy. It ensures that enterprise data remains confidential and does not get exposed to external parties. It leverages the technology of ChatGPT specifically for understanding natural queries and facilitating seamless interactions. By maintaining the privacy of data, ConverSight GPT provides a secure and reliable environment for users to engage with the system, instilling confidence and safeguarding sensitive information within the enterprise ecosystem.



4.3 Breaking Down Data Silos

ConverSight GPT overcomes the challenge of data silos within organizations. By integrating data from various sources and databases, ConverSight GPT creates a unified and cohesive view of information. This integration enables users to access and analyze data from different departments or systems, breaking down data silos and promoting cross-functional collaboration.

5. Conclusion

In conclusion, ConverSight GPT offers several advantages that make it a compelling choice for utilization. It provides automated platform monitoring, allowing for efficient and proactive management of the platform. The availability of ready-to-use templates further enhances usability, enabling quick implementation and customization. Moreover, ConverSight GPT's cloud-neutral approach ensures compatibility and flexibility across different cloud environments. Lastly, its embedding capability allows seamless integration into existing systems, promoting a smooth user experience. Collectively, these features make ConverSight GPT a valuable tool for organizations seeking advanced AI-powered solutions.

Join our customers who have accelerated growth with ConverSight



[Request a demo](#)

About ConverSight

ConverSight's Adaptive Analytics platform uses conversational AI, Natural Language Processing and machine learning to converge the distance between humans and data through data stories, presenting the meaning of data in the most effective, personalized and efficient form possible. ConverSight's patented AI business assistant, Athena, connects distributed databases to answer questions and Augment the consumers through 4 key functions: Information on demand, Automated Story Telling, Proactive Insights, and Recommended Actions.

For more information, visit www.conversight.ai

