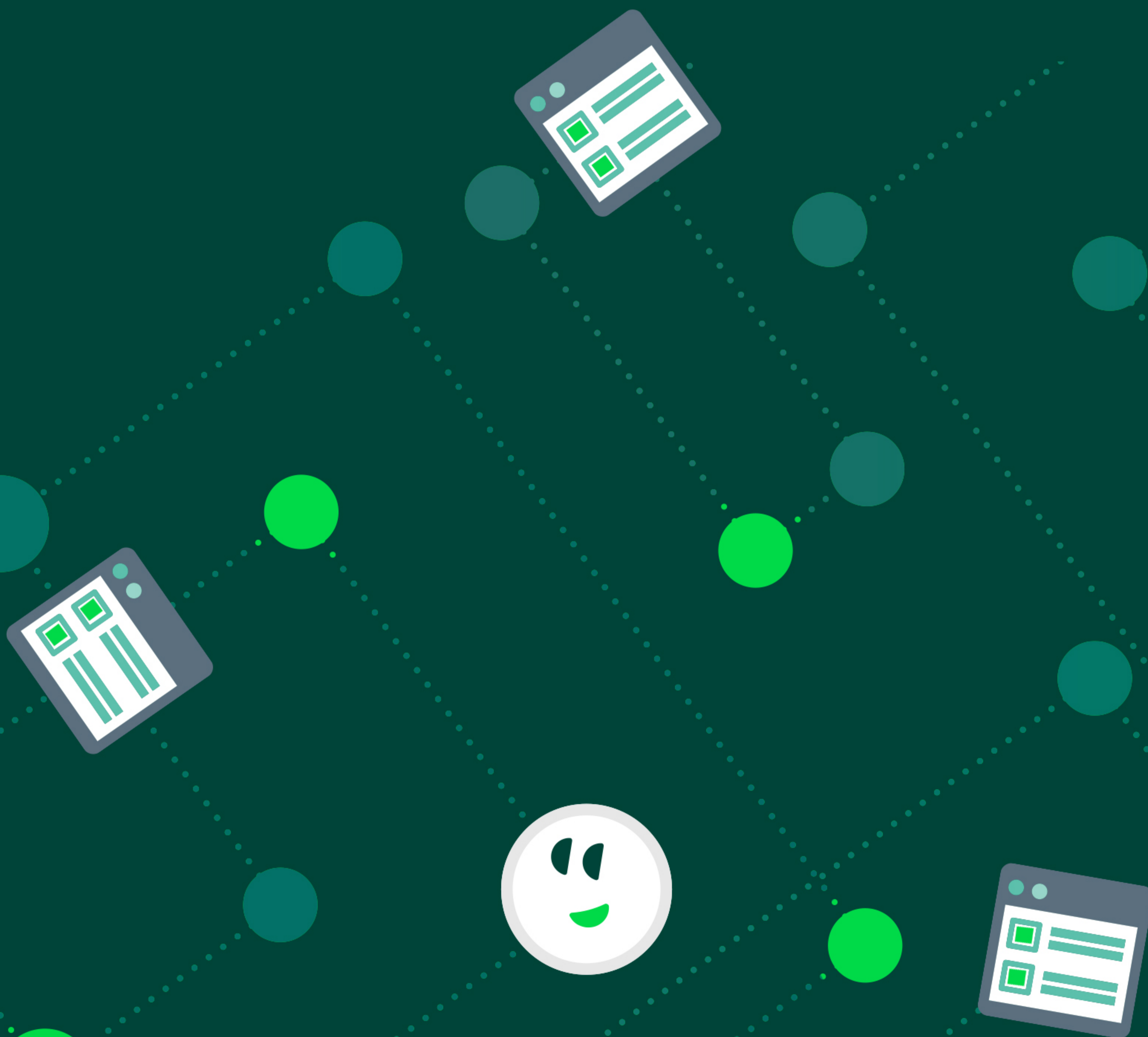


# Relationship

ConverSight's Data Alchemy through Relationships & Joins.





# Table of Contents

|                                |    |
|--------------------------------|----|
| 1. Introduction                | 02 |
| 2. Relationship in ConverSight | 02 |
| 3. Conclusion                  | 09 |





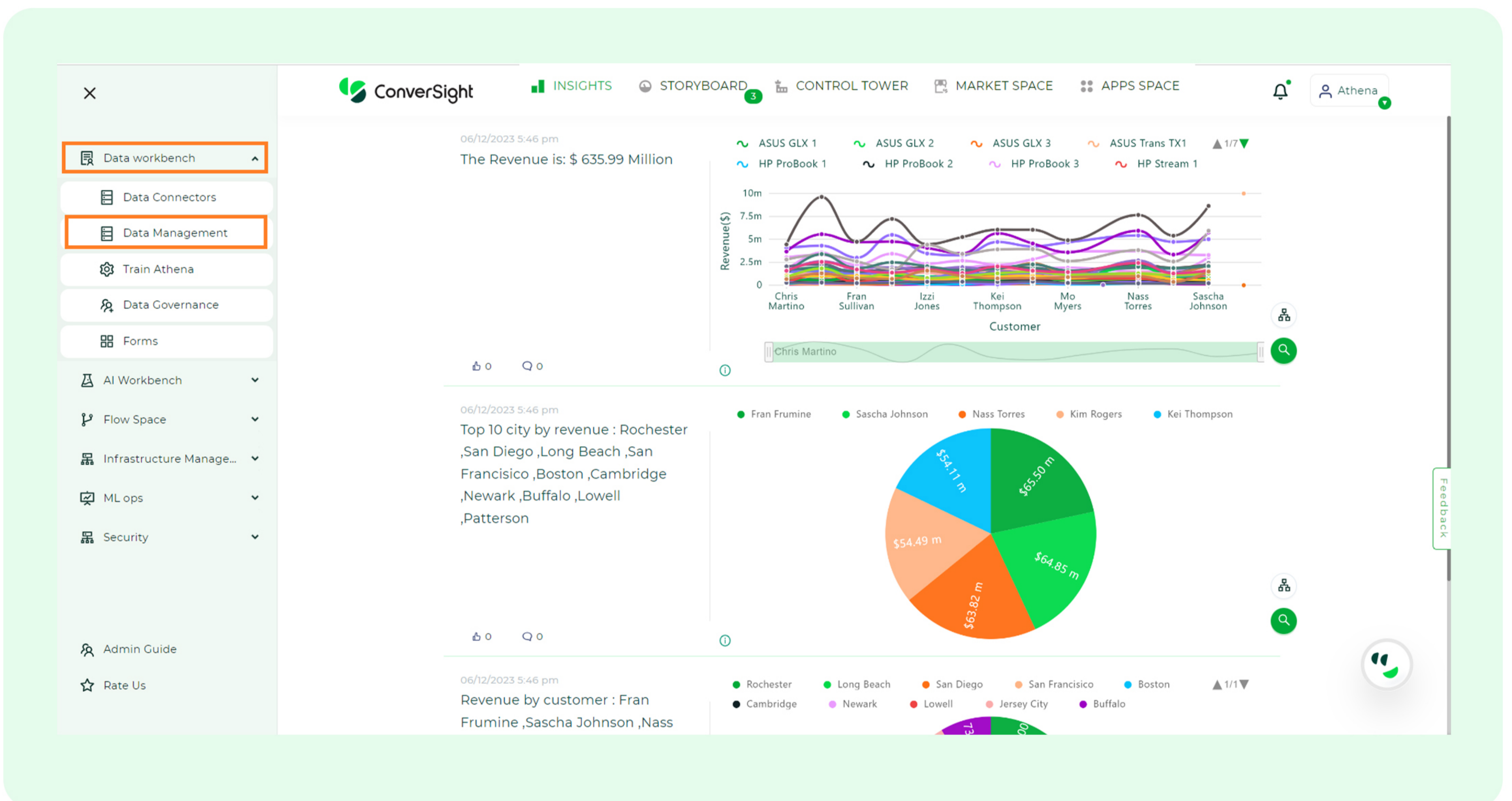
# I. Introduction

ConverSight plays a pivotal role in strategically extracting insights from interconnected tables within a shared dataset. The establishment of Relationship between data within ConverSight's framework is of paramount importance for deriving invaluable business intelligence. Skillful utilization of joins allows for intricate queries, enhancing analysis and decision-making capabilities. ConverSight's join functionality also helps transform raw data into actionable insights, enabling well-informed decisions and cultivating a competitive edge within the dynamic data-driven business landscape.

## 2. Relationship in ConverSight

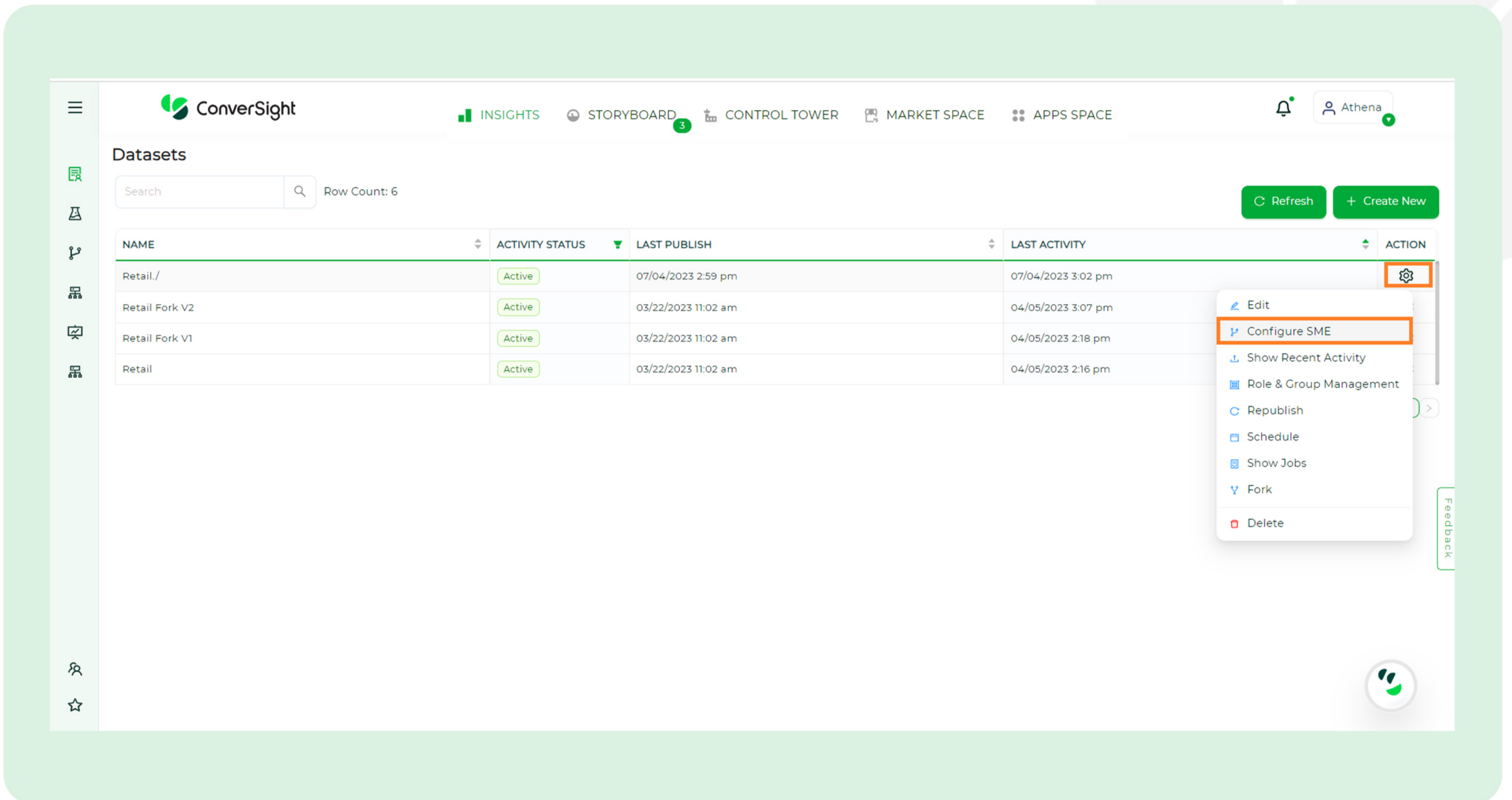
In the ConverSight platform, users possess the ability to forge interconnected Relationships between tables, a process that trains Athena, the conversational AI assistant. This training equips Athena with the proficiency to address intricate queries that traverse diverse tables within a dataset, thereby augmenting its capacity to furnish all-encompassing and precise insights. To create a join between the tables, you can follow these steps:

**Step 1:** Select the **'Data Management'** option from the **'Data Workbench'** menu.

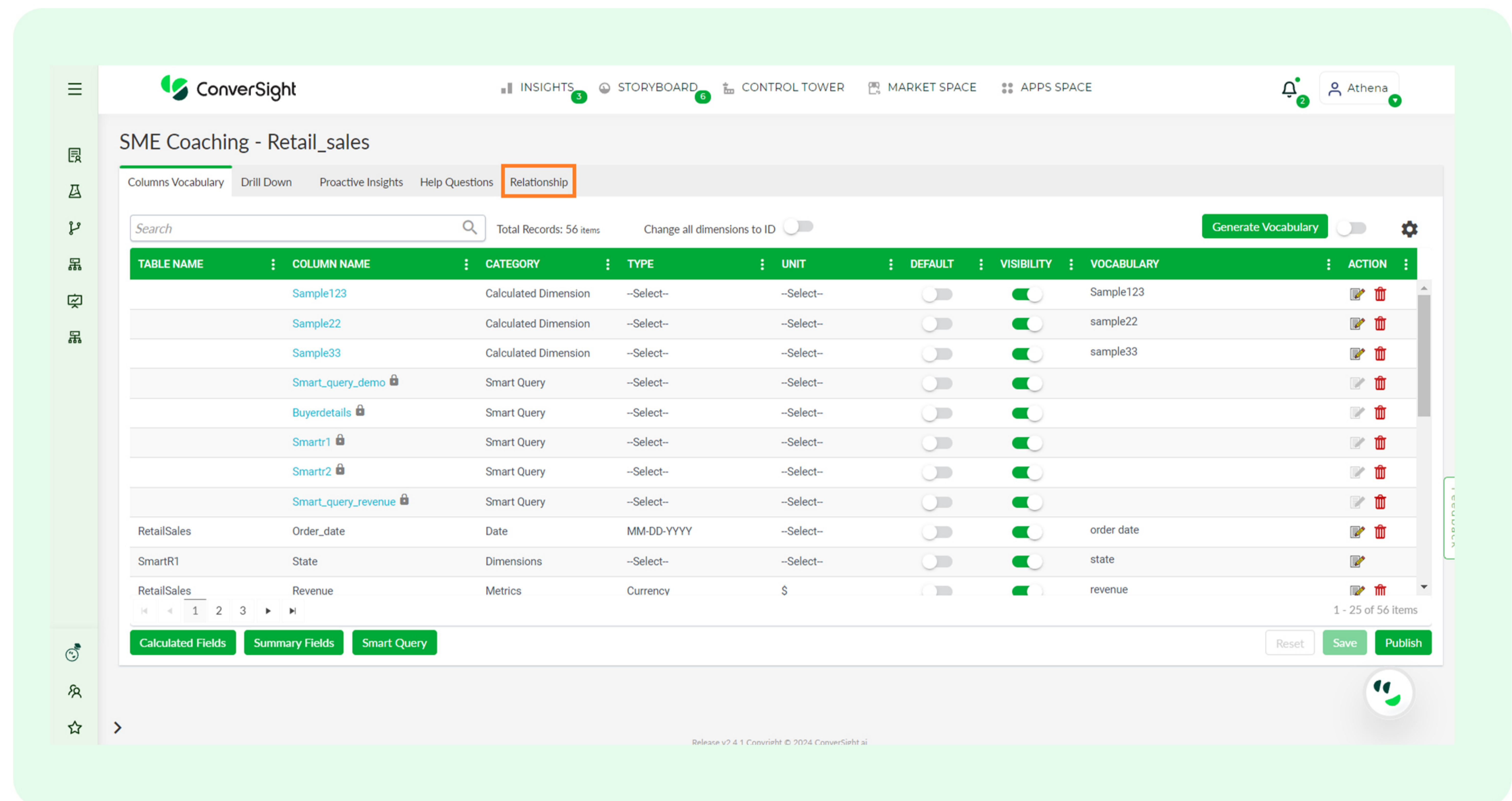




**Step 2:** Access the **'Settings'** icon aligned with the relevant dataset in the action column, followed by choosing the **'Configure SME'** option.

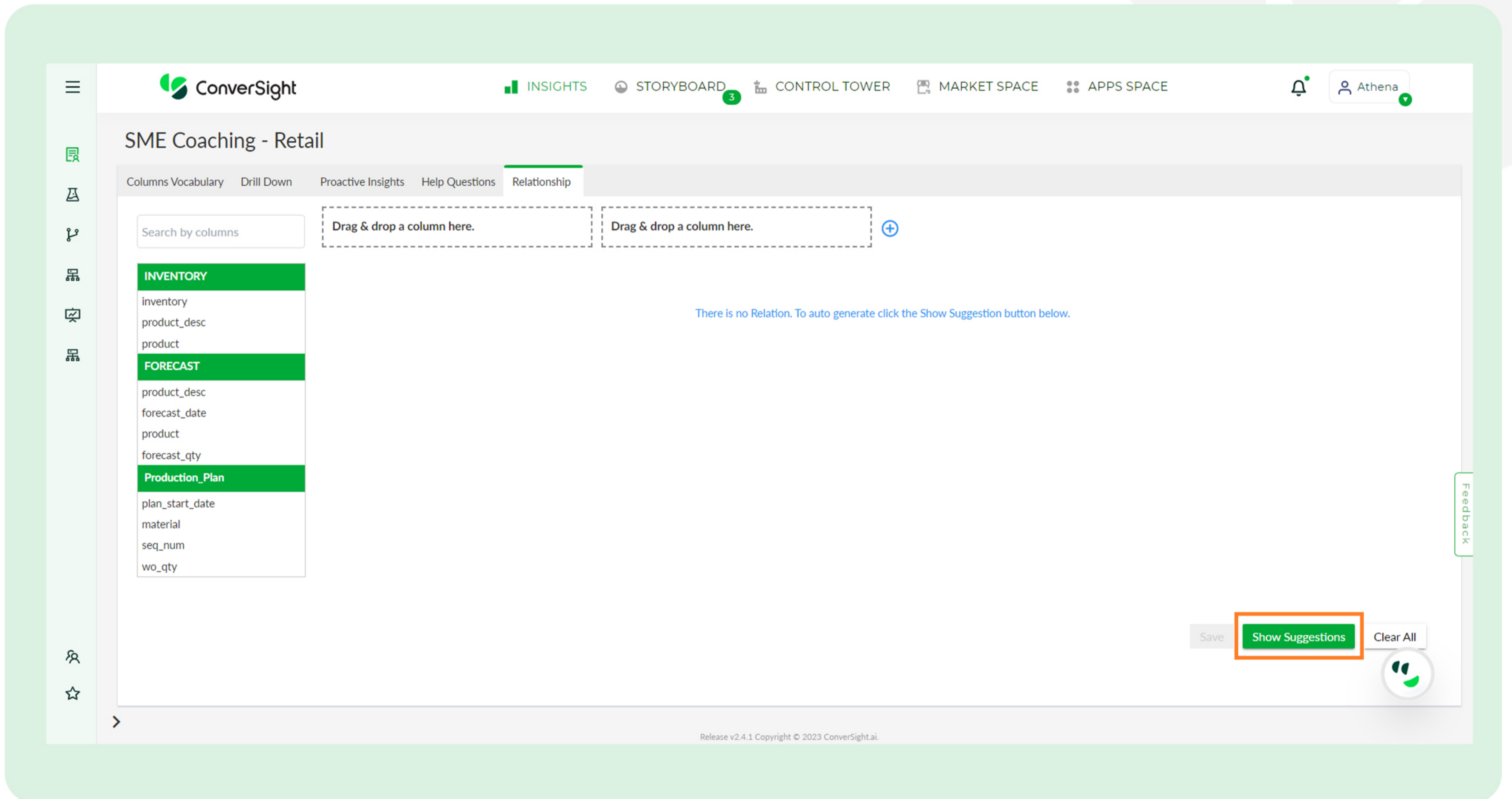


**Step 3:** In the SME Coaching page, switch to the **'Relationship'** tab.

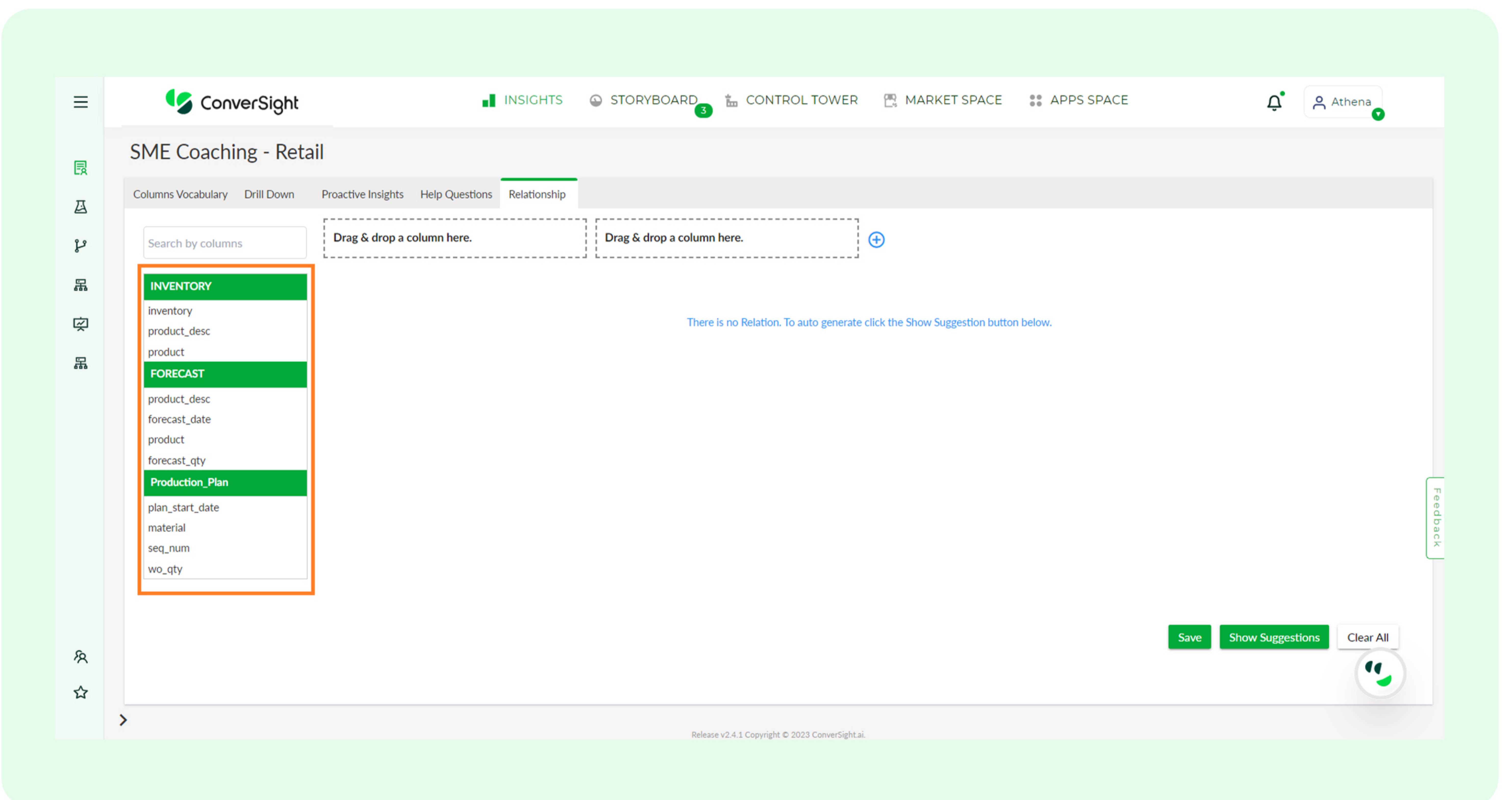




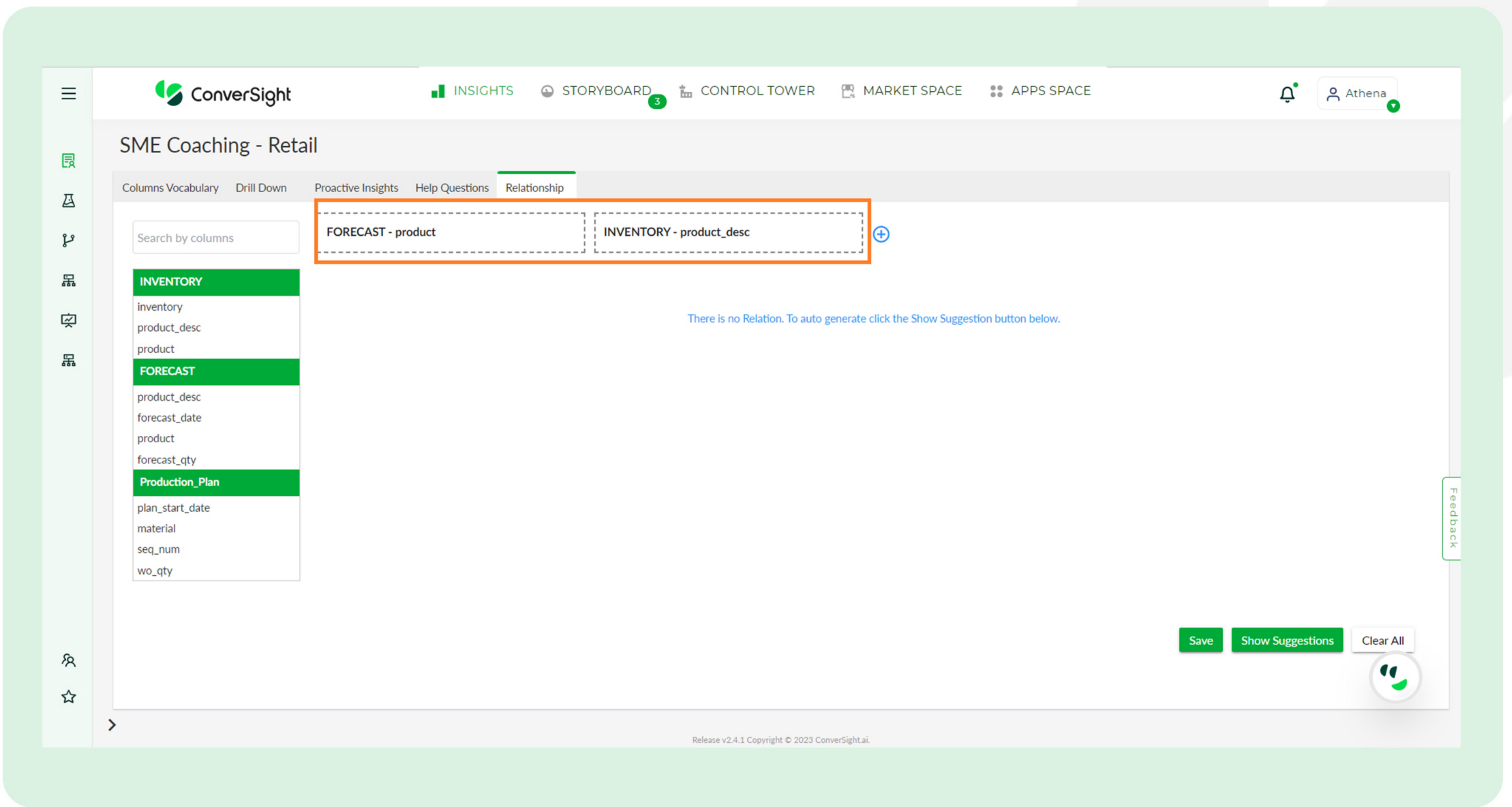
**Step 4:** In the Relationship tab, you'll find the columns and table names listed on the left side of the screen. The **'Show Suggestions'** button becomes active when there are no existing Relationships or when setting up joins for the first time. Simply click the **'Show Suggestions'** button to automatically generate joins.



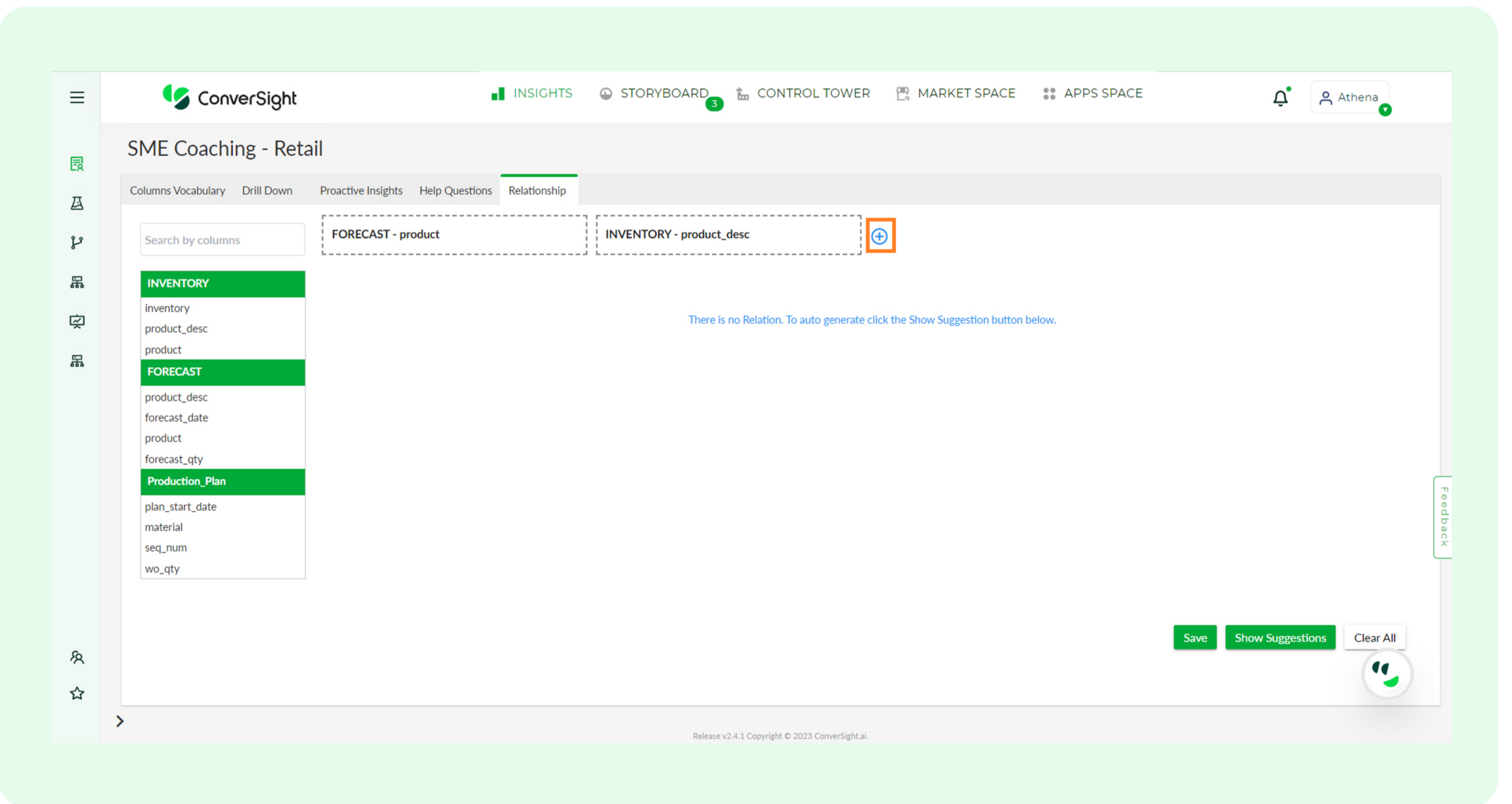
**Step 5:** Users can also establish joins manually by **'Dragging and Dropping'** the columns of the dataset in the respective boxes and it is important to note that it's not possible to create a connection between columns within the same table.



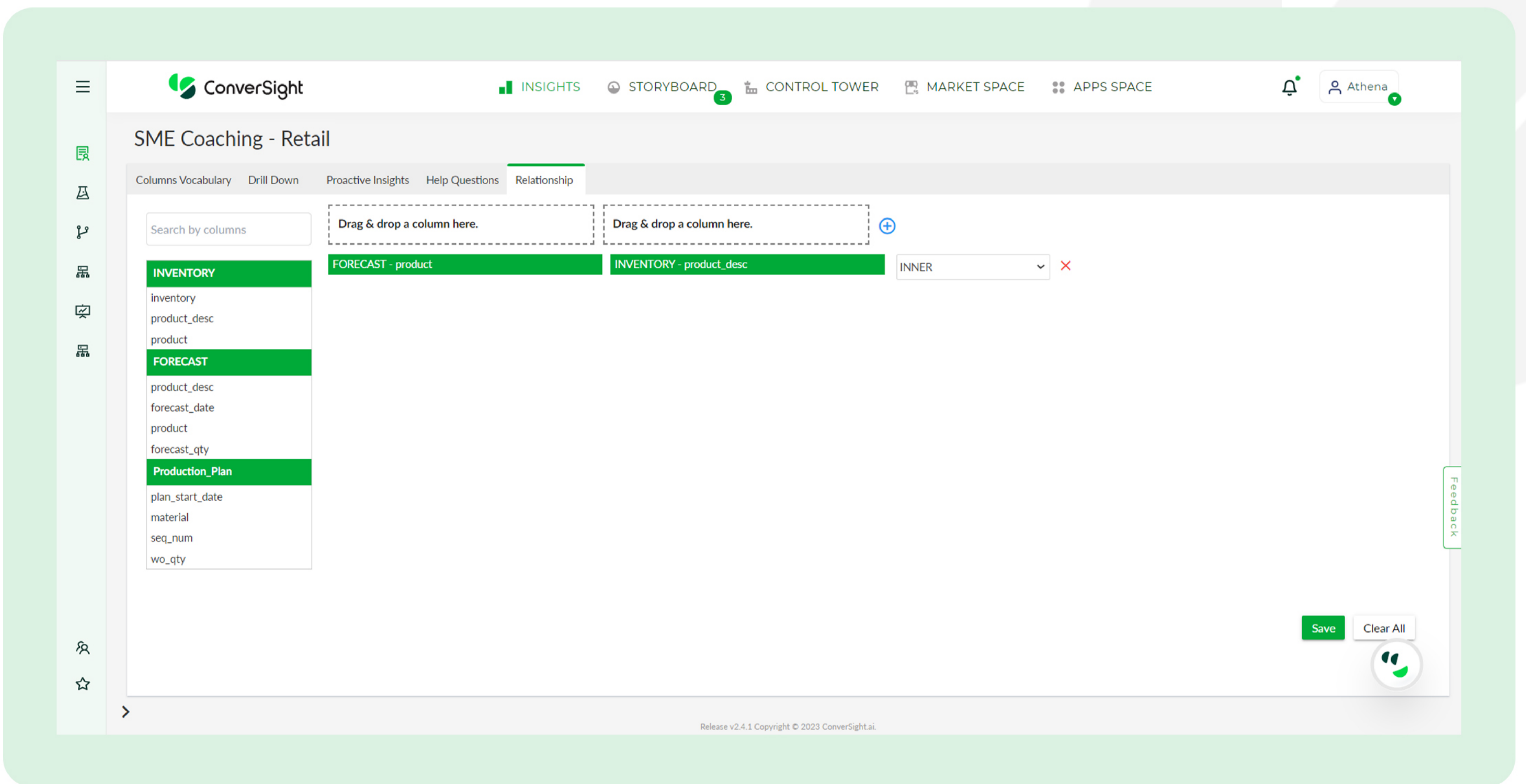




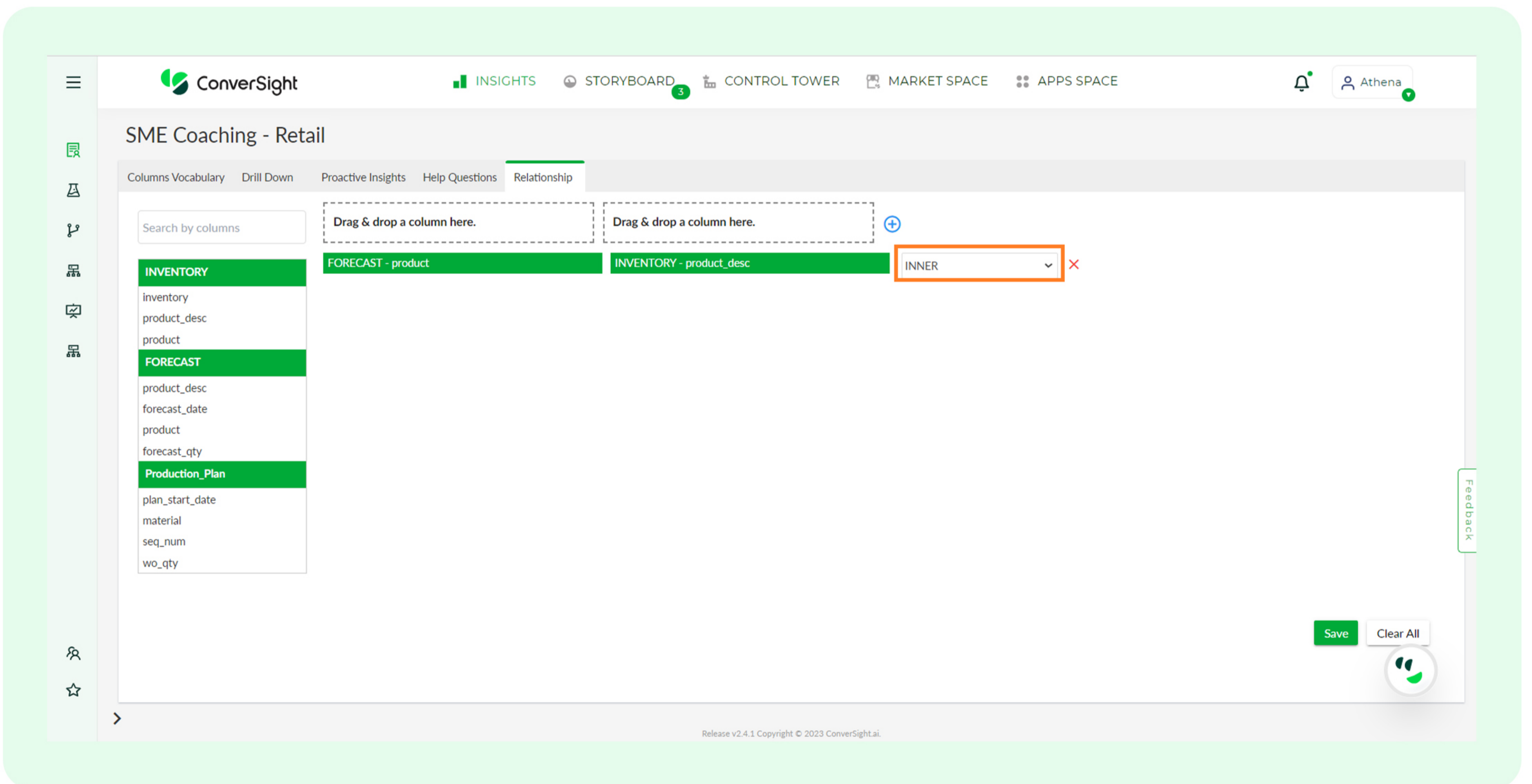
**Step 6:** Click on the **'Plus'** icon, to create a Relationship between the selected columns.



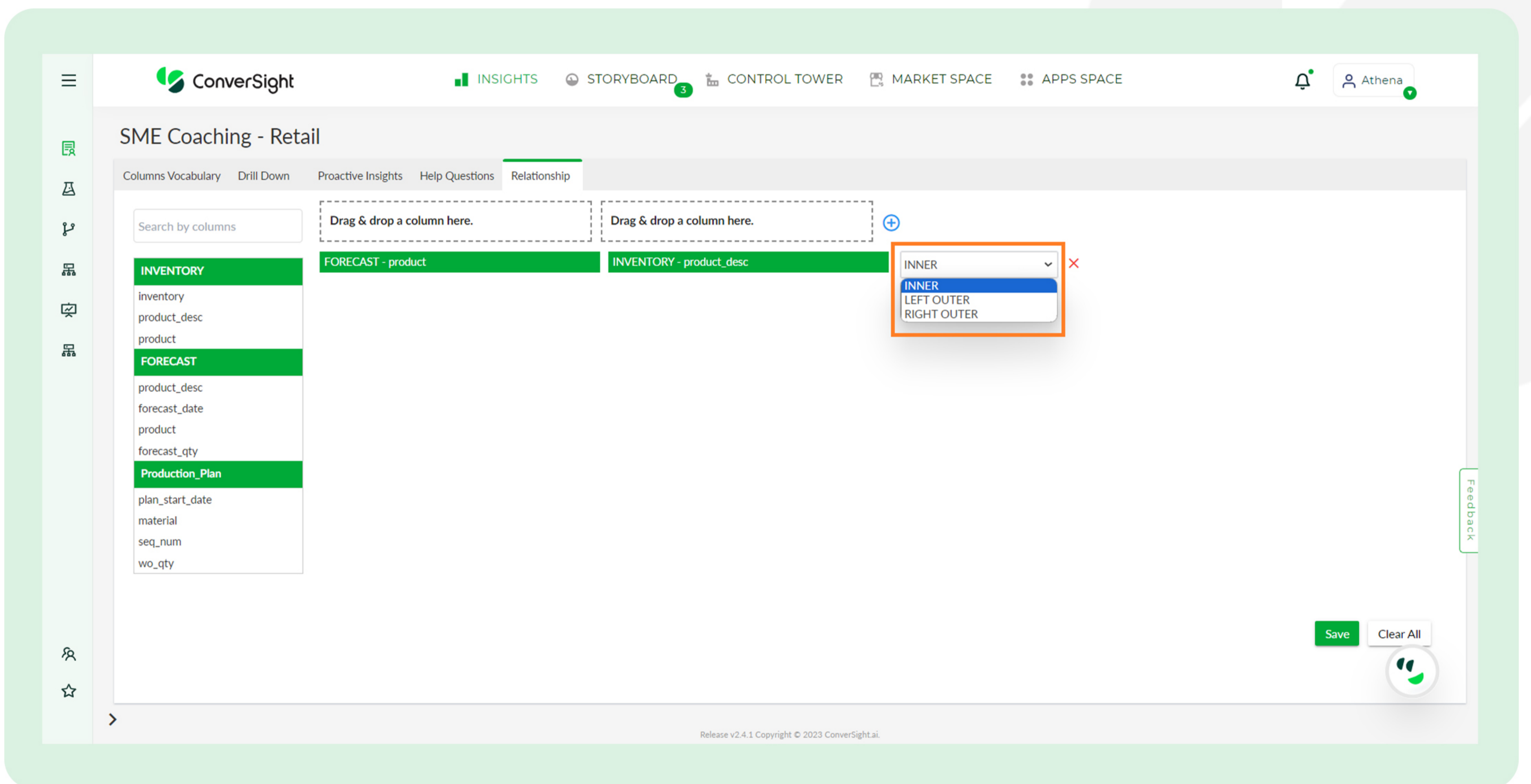




**Step 7:** ConverSight offers **'Inner join'** as the default option, but users have the flexibility to select a different type of join from the provided dropdown menu.



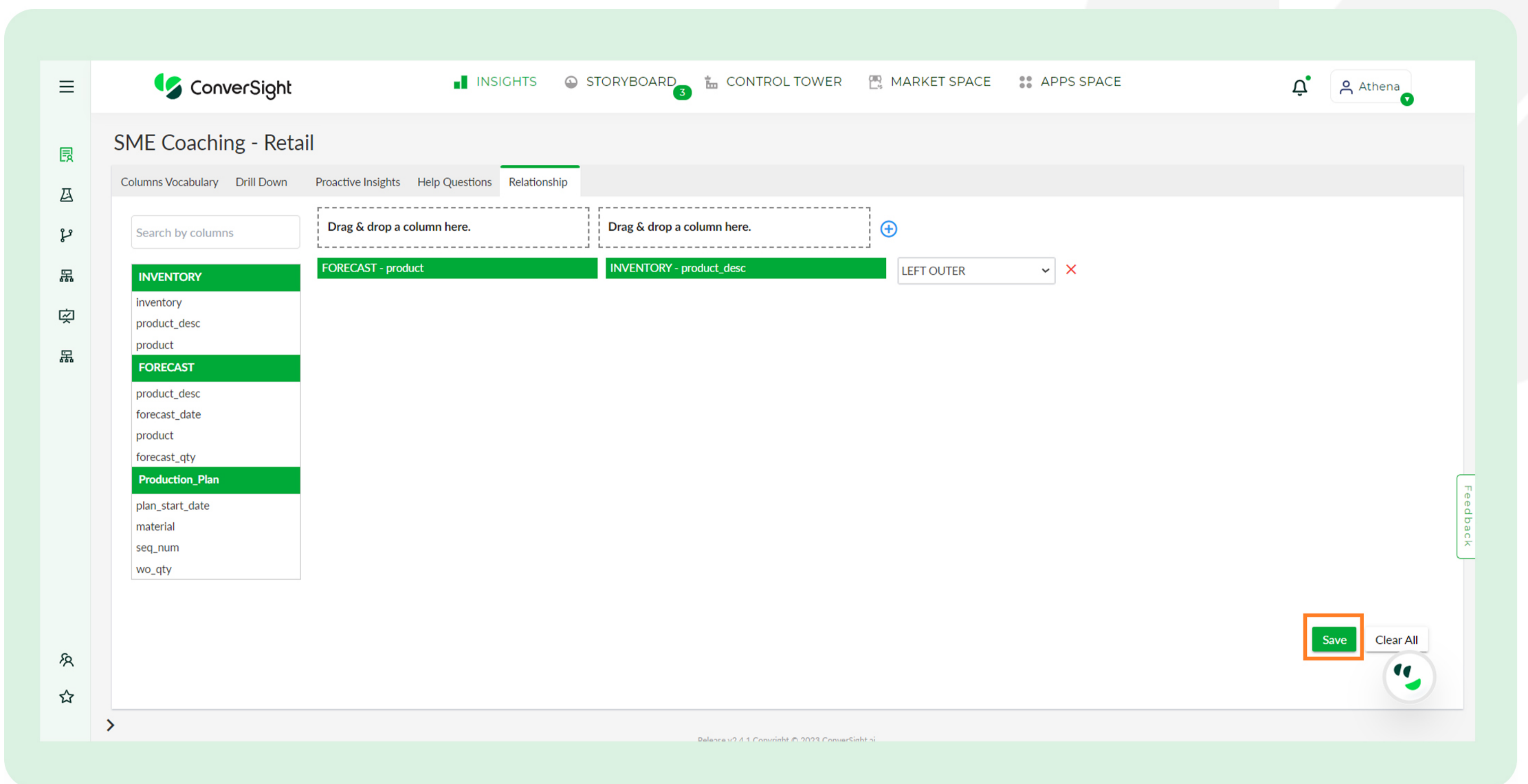




- 🟢 **Inner Join:** Inner Join retrieves only the rows that have matching values in the specified columns of both tables. It requires a common column (or columns) between the two tables being joined.
- 🟢 **Left Outer Join:** In a Left Outer Join, rows from the left table are linked with zero or more rows from the right table using shared columns. If there's no matching row in the right table for a row in the left table, the result will have null values in the right table's columns.
- 🟢 **Right Outer Join:** In a Right Outer Join, rows from the right table are matched with zero or more rows from the left table based on shared columns. If a row in the left table doesn't have a match, its columns will contain null values.

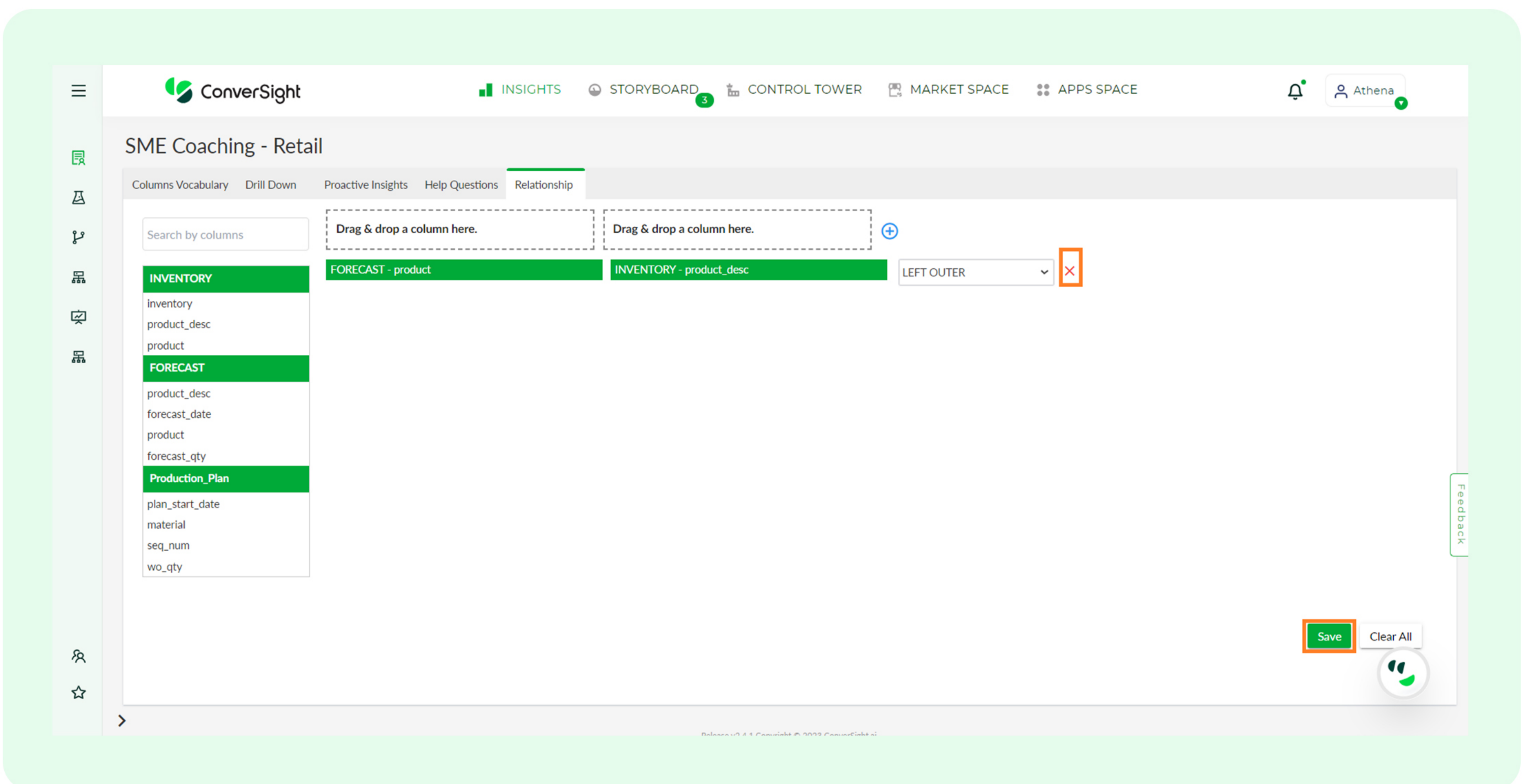
**Step 8:** Click on the **'Save'** button to save the established connection.





Upon completion of saving the Relationship between columns, users possess the capability to formulate complex queries rooted in the established table joins, with Athena readily providing responsive outputs.

**Step 9:** Users have the option to remove a join by clicking on the '**cross**' icon and subsequently clicking the '**Save**' button.





### 3. Conclusion

ConverSight's robust framework for establishing Relationships through joins brings exceptional value to data-driven business strategies. By seamlessly merging tables and leveraging join functionalities, ConverSight empowers users to extract meaningful insights and make informed decisions. With its conversational AI assistant, Athena, adept at handling intricate queries across interconnected tables, ConverSight proves itself as an invaluable asset in navigating the complex landscape of data-driven decision-making.



## Join our customers who have accelerated growth with ConverSight



### About ConverSight

ConverSight's Adaptive Analytics platform uses conversational AI, Natural Language Processing and machine learning to converge the distance between humans and data through data stories, presenting the meaning of data in the most effective, personalized and efficient form possible. ConverSight's patented AI business assistant, Athena, connects distributed databases to answer questions and Augment the consumers through 4 key functions: Information on demand, Automated Story Telling, Proactive Insights, and Recommended Actions.

For more information, visit [www.conversight.ai](http://www.conversight.ai)

