



Supercharge

Your Fishbowl Operations with
AI-Powered Insights from ConverSight



 FISHBOWL

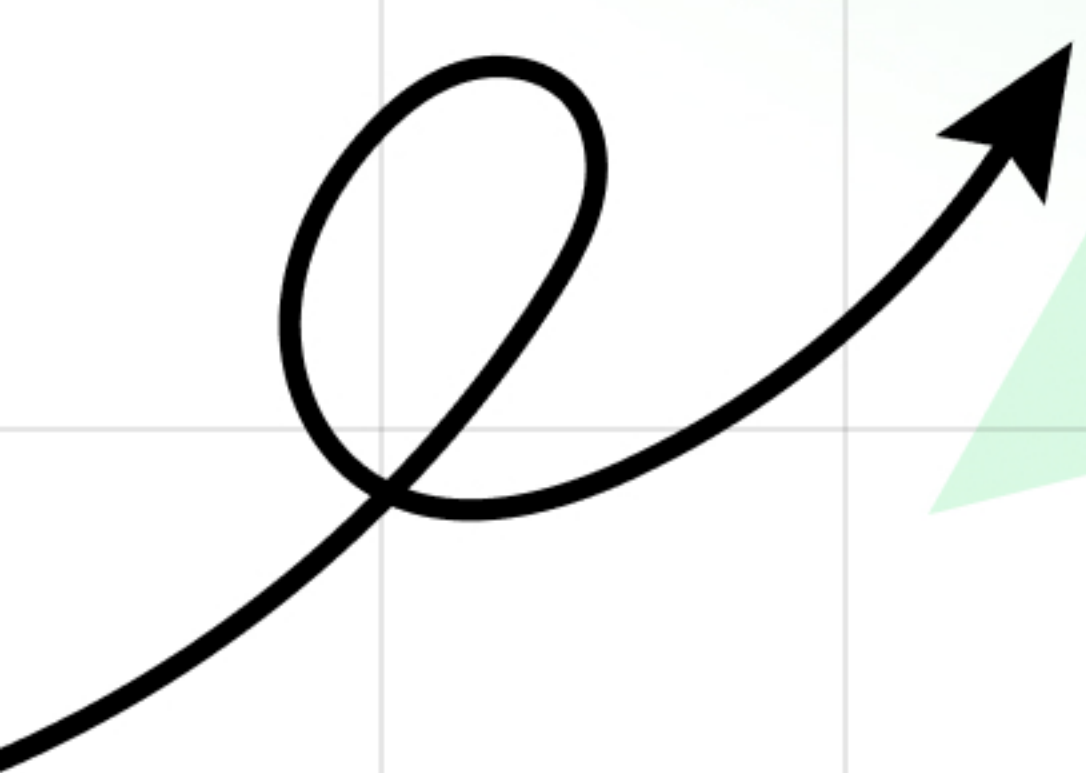
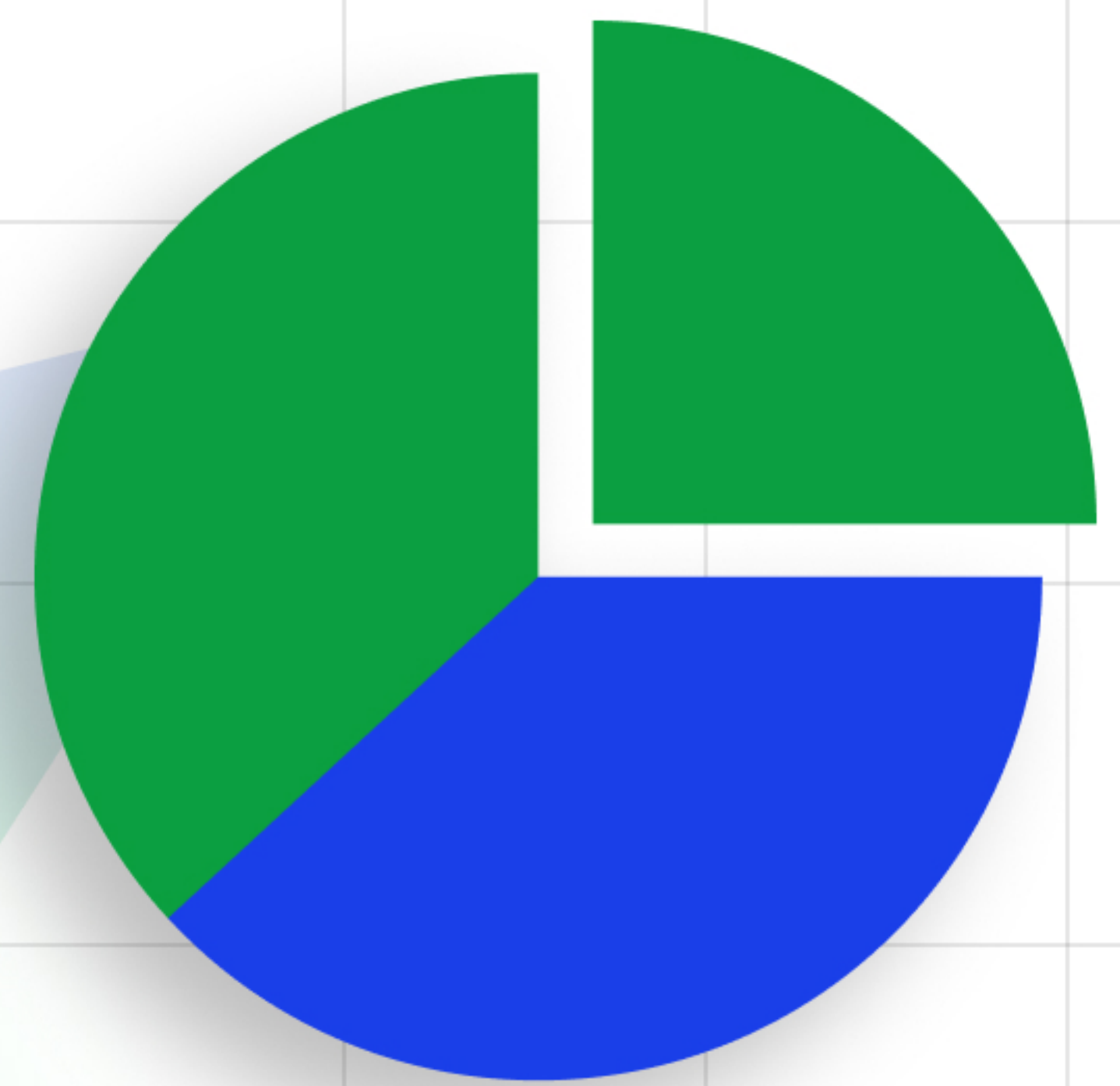
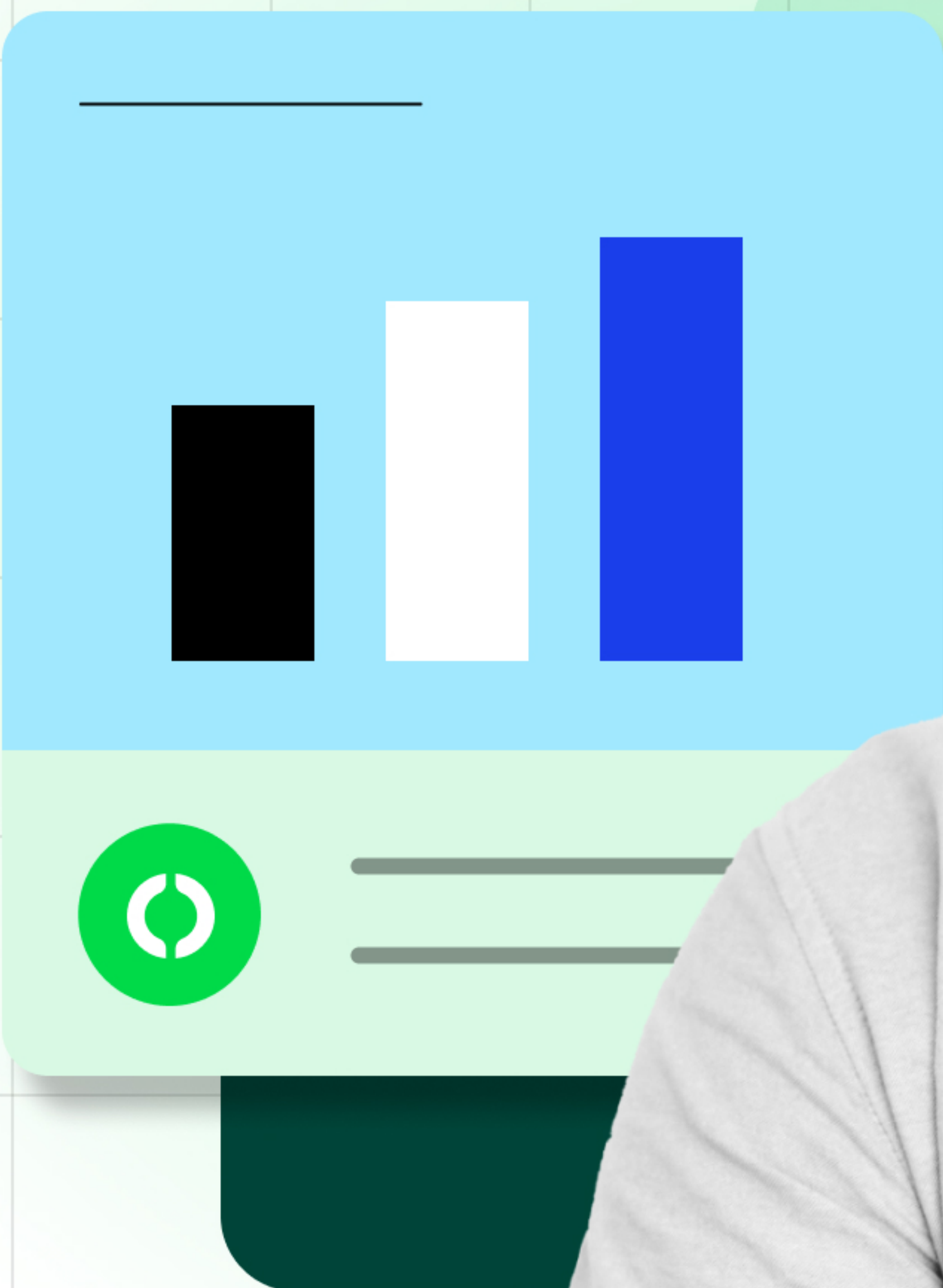




Table of Contents



1. Introduction

1.1 Common Challenges Faced by Fishbowl Users

2. Benefits of Fishbowl and ConverSight Integration

2.1 Complete Data Visibility

2.2 Automated Insights and KPIs

2.3 Pre-Configured Storyboards

2.4 Advanced Forecasting

2.5 Custom Reports and Scheduling

2.6 Ask Athena - Instant Business Insights

3. Real-World Benefits of ConverSight for Fishbowl Users

4. How to Get Started

5. Conclusion



1. Introduction ●



Welcome, Fishbowl Users!

As a Fishbowl user, you're already leveraging one of the most trusted inventory management systems in the industry. Fishbowl has been instrumental in helping businesses streamline operations, automate routine processes and maintain better control over inventory. But in today's fast-paced, data-driven world, managing inventory effectively is no longer just about keeping track of stock levels—it's about anticipating future needs, identifying opportunities and staying ahead of the competition.

This ebook will walk you through the unparalleled benefits of integrating Fishbowl with ConverSight, giving you a roadmap to transform your business operations.

1.1. Common Challenges Faced by Fishbowl Users

Fishbowl is an excellent tool for automating inventory and purchase orders. However, it leaves gaps in:

■ Data Visibility

Limited real-time insights into your operations.

● Customization

Static reports that don't cater to unique business needs.

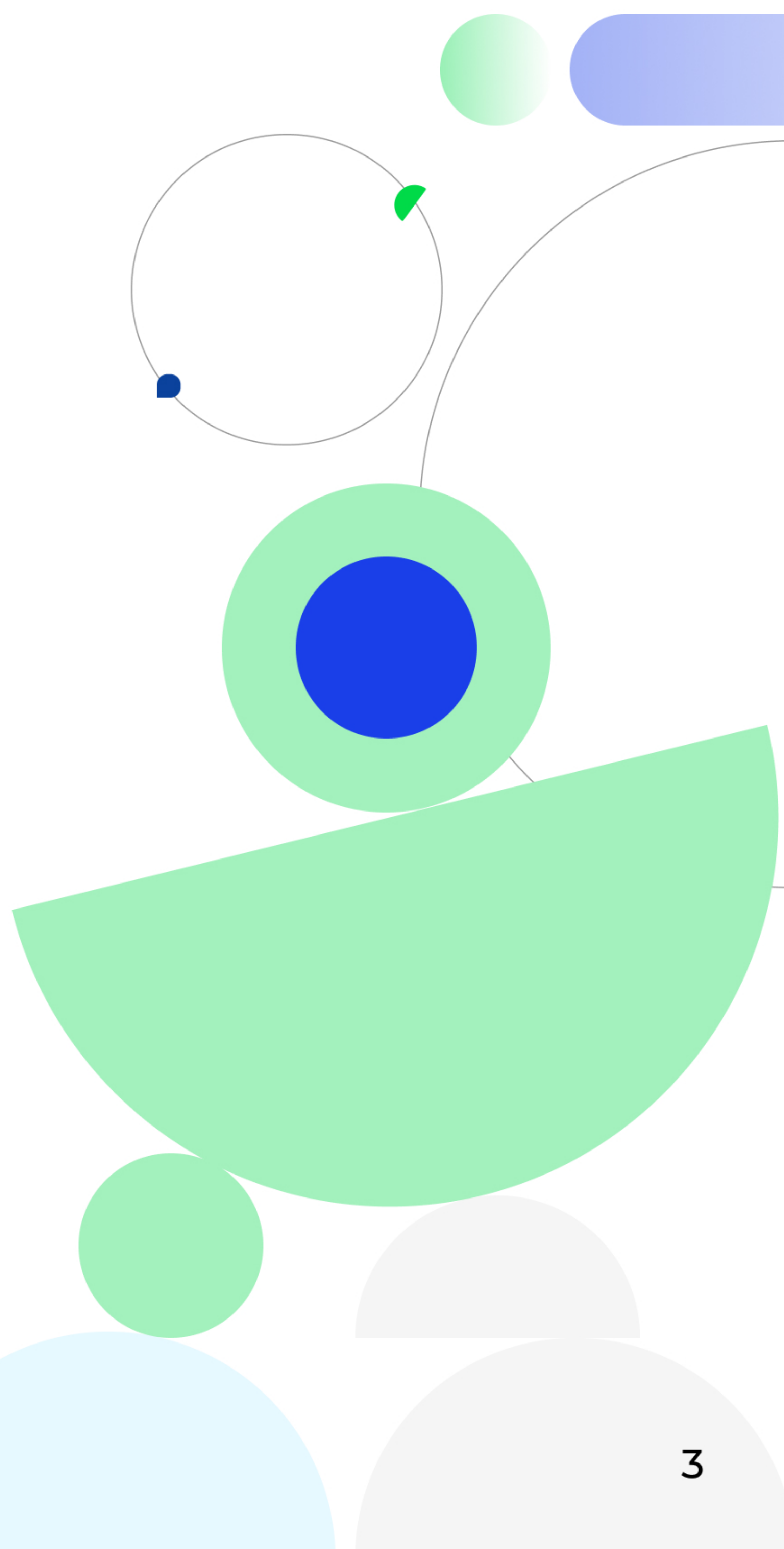
■ Advanced Forecasting

Lack of predictive analytics for inventory and sales trends.

● Workflow Automation

Manual efforts for data exploration and reporting.

With ConverSight, you can address these limitations and achieve next-level efficiency, intelligence and automation.



2. Benefits of Fishbowl and ConverSight Integration

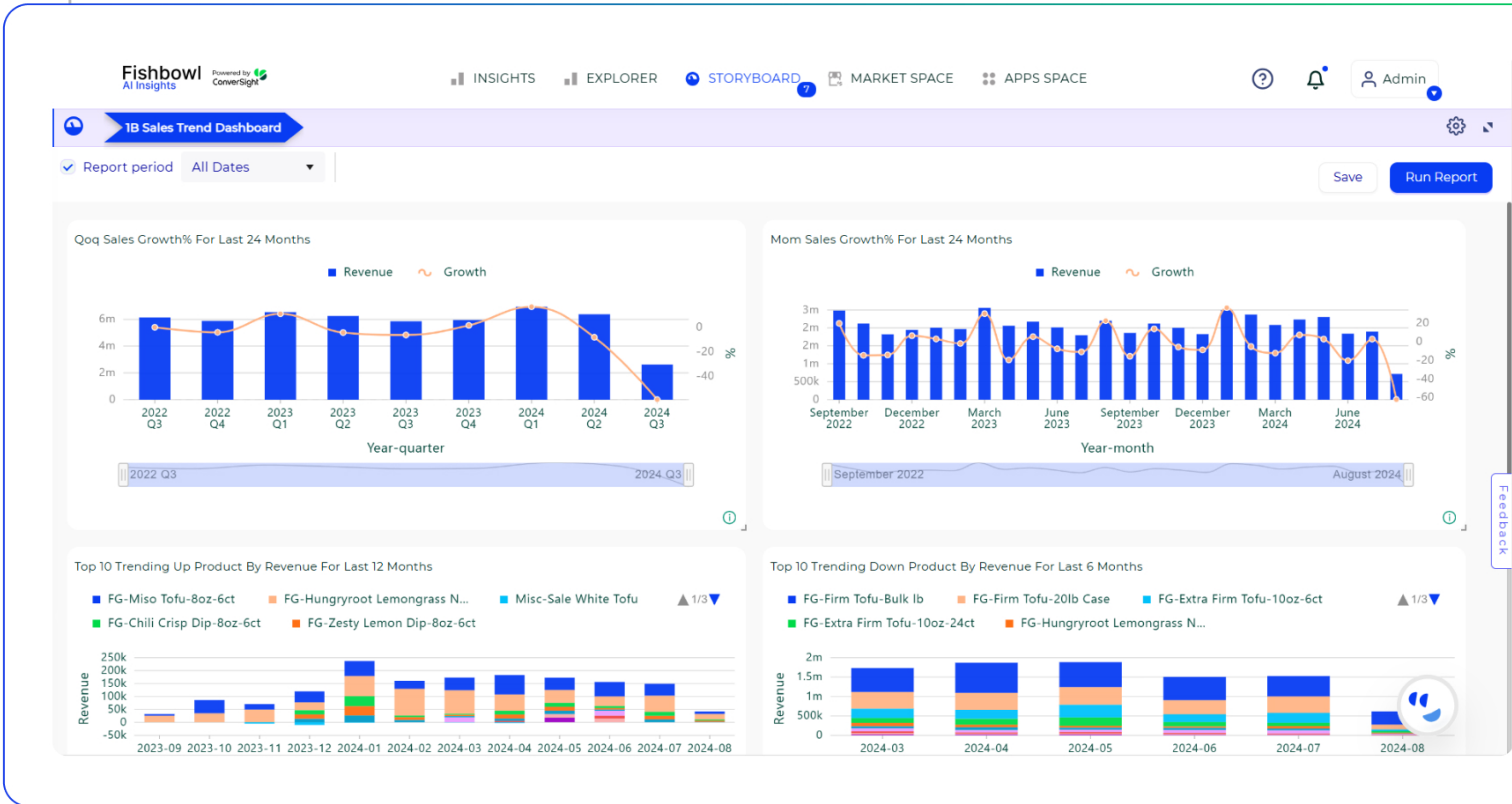
2.1. Complete Data Visibility

Gain a 360-degree view of your operations by visualizing all Fishbowl data in an intuitive, user-friendly format.

Unified Dashboards: Monitor inventory, sales, purchasing and operations in one place.

Real-Time Updates: No more waiting for manual data exports or updates, access live insights.

Accessibility: View your data anytime, anywhere on any device.

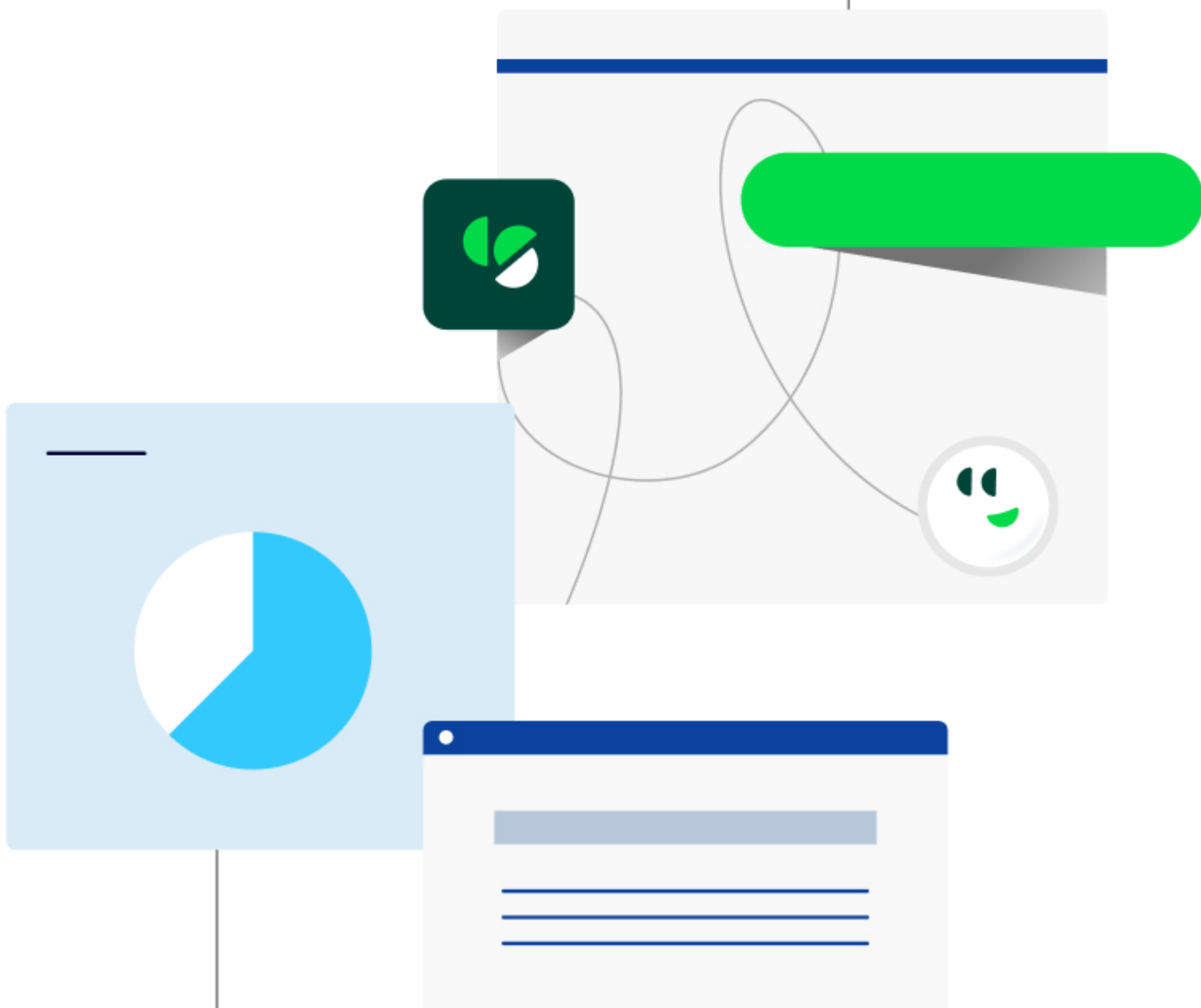


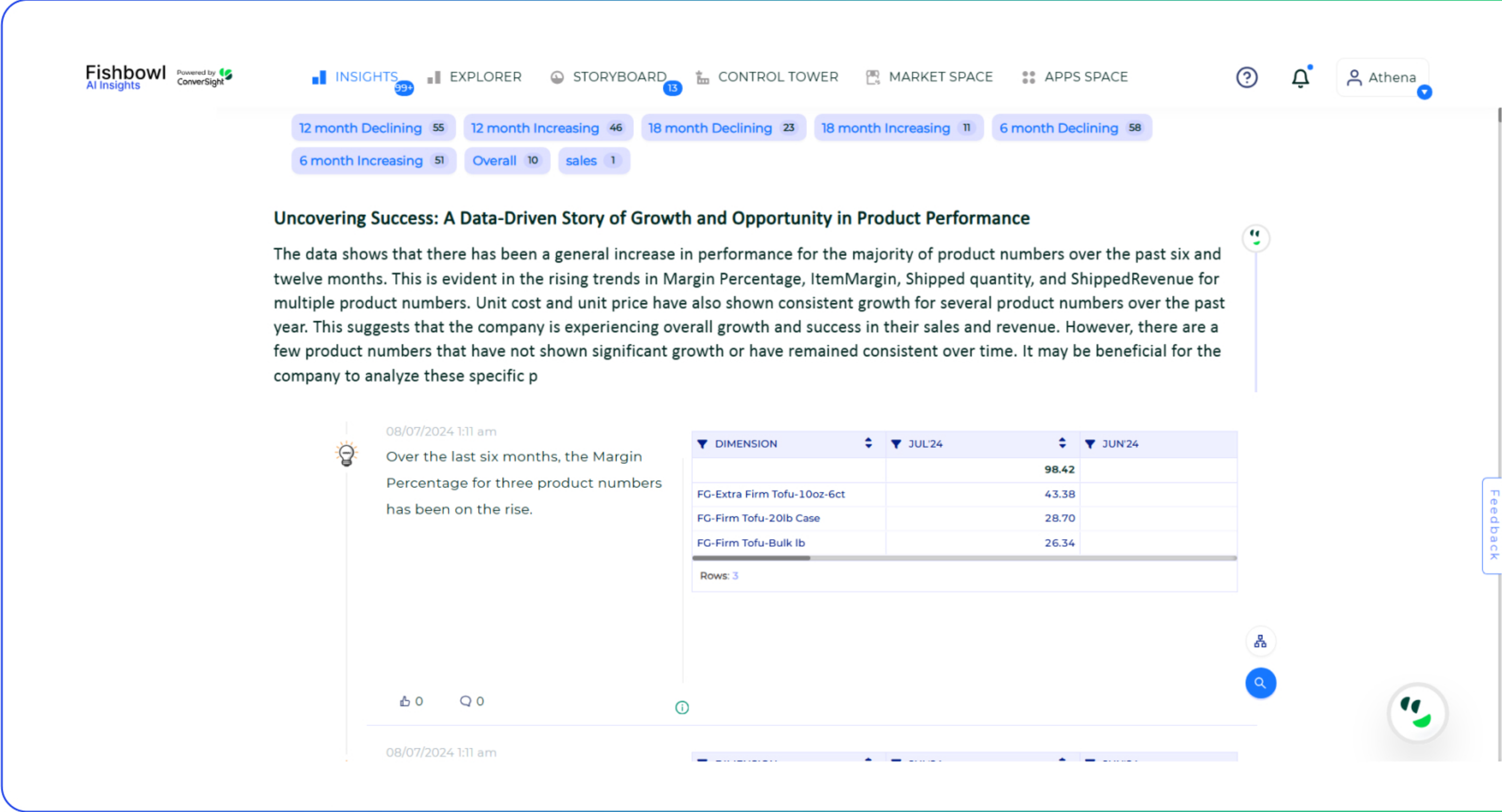
2.2. Automated Insights and KPIs

ConverSight eliminates guesswork by providing necessary KPIs tailored to your Fishbowl data.

Set-Up-Free Metrics: Once integrated, essential KPIs like stock levels, revenue and supplier performance are ready to use.

Alerts: Stay informed with notifications when thresholds are breached (e.g., low inventory levels).





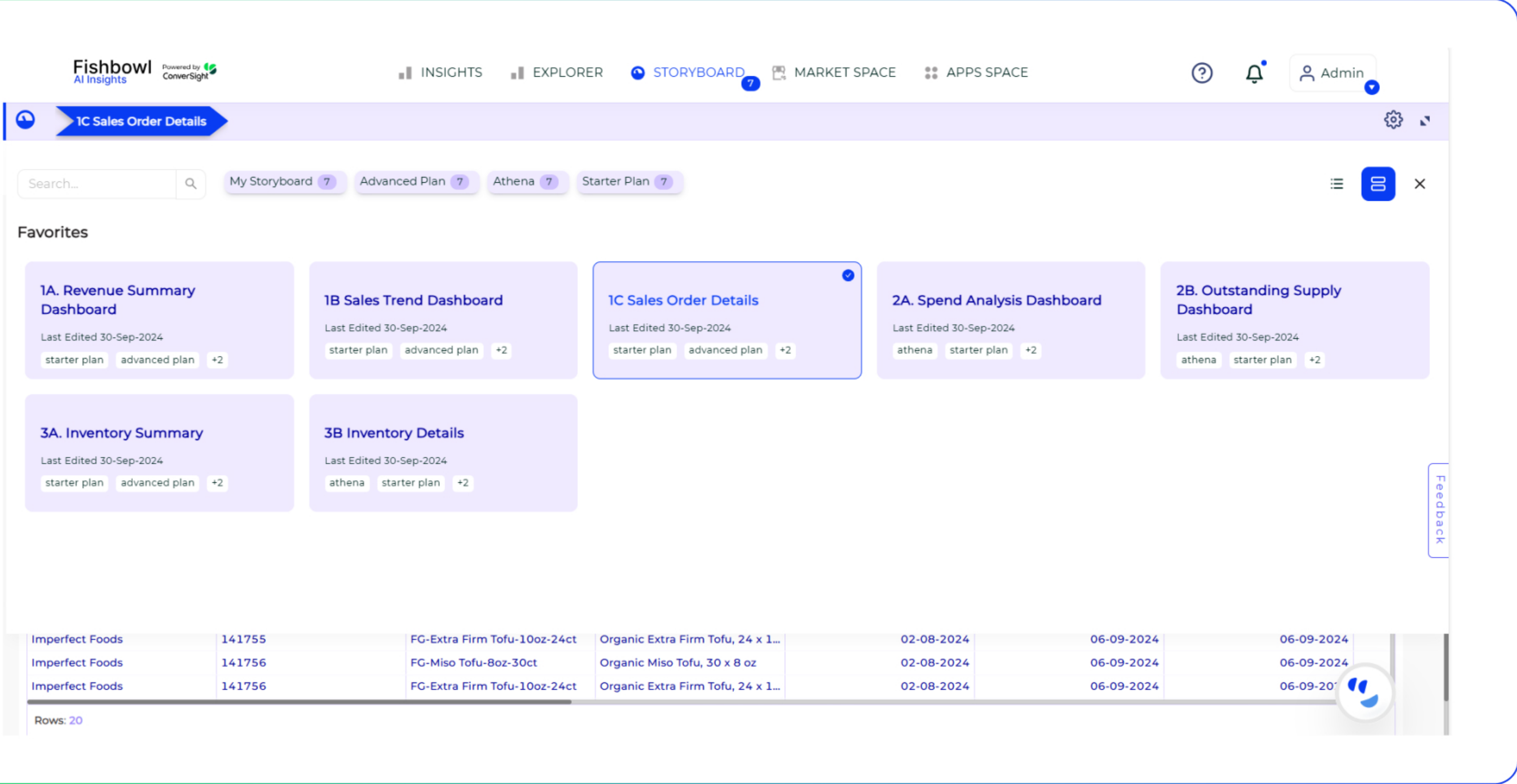
2.3. Pre-Configured Storyboards

Storyboards are a unique feature that makes visualizing and analyzing data effortless.

Plug-and-Play Design: No need to build dashboards from scratch. Storyboards are ready for immediate use.

Cross-Functional Insights: Each storyboard is designed to serve different business functions —sales, inventory, procurement and financials.

Enhanced Collaboration: Teams across departments can access and discuss the same visualized data.



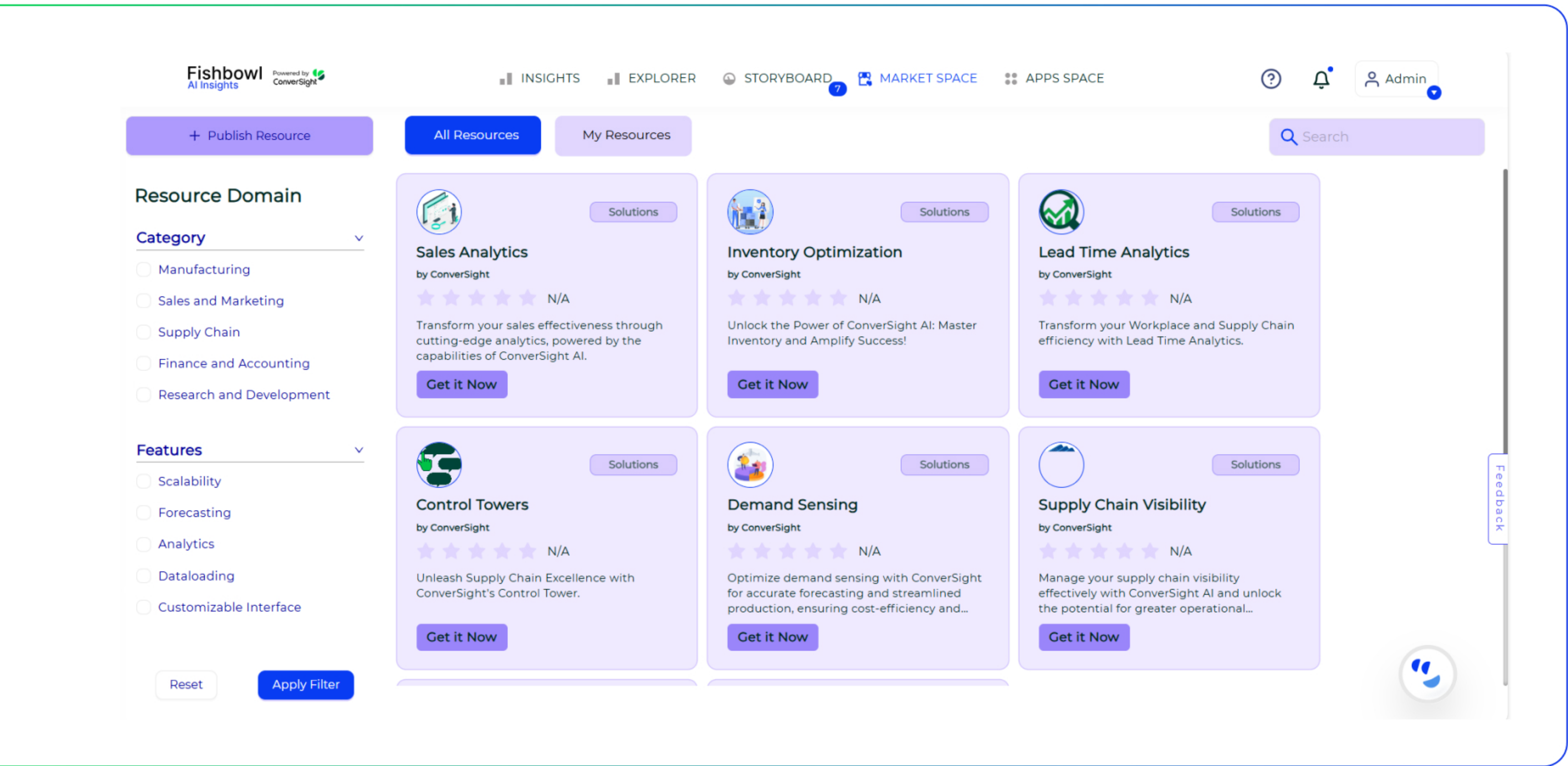
2.4. Advanced Forecasting

Fishbowl’s rule-based reordering works well for standard operations but cannot predict future needs based on trends and external factors.

AI-Driven Predictions: ConverSight analyzes historical data and market trends to forecast demand accurately.

Scenario Planning: Test different "what-if" scenarios (e.g., how a sales promotion might affect inventory levels).

Dynamic Adjustments: Recommendations adapt to changing conditions, ensuring your strategies remain relevant.



2.5. Custom Reports and Scheduling

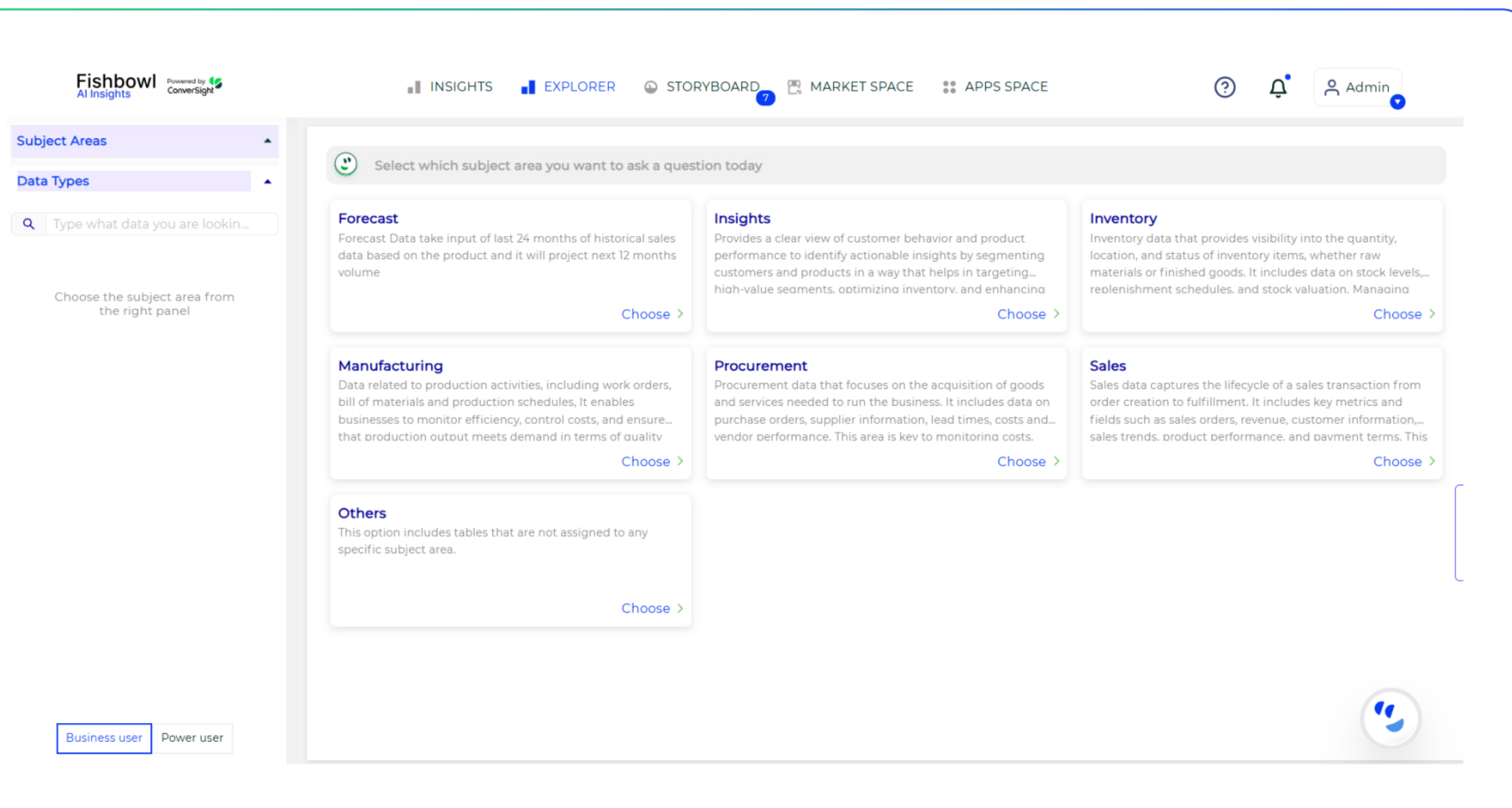
Say goodbye to the manual effort of building and distributing reports. ConverSight automates this process end-to-end.

Highly Customizable: Design reports tailored to your business needs, including data from multiple systems.

Automated Scheduling: Set up reports to be sent daily, weekly, or monthly to your team’s inboxes.

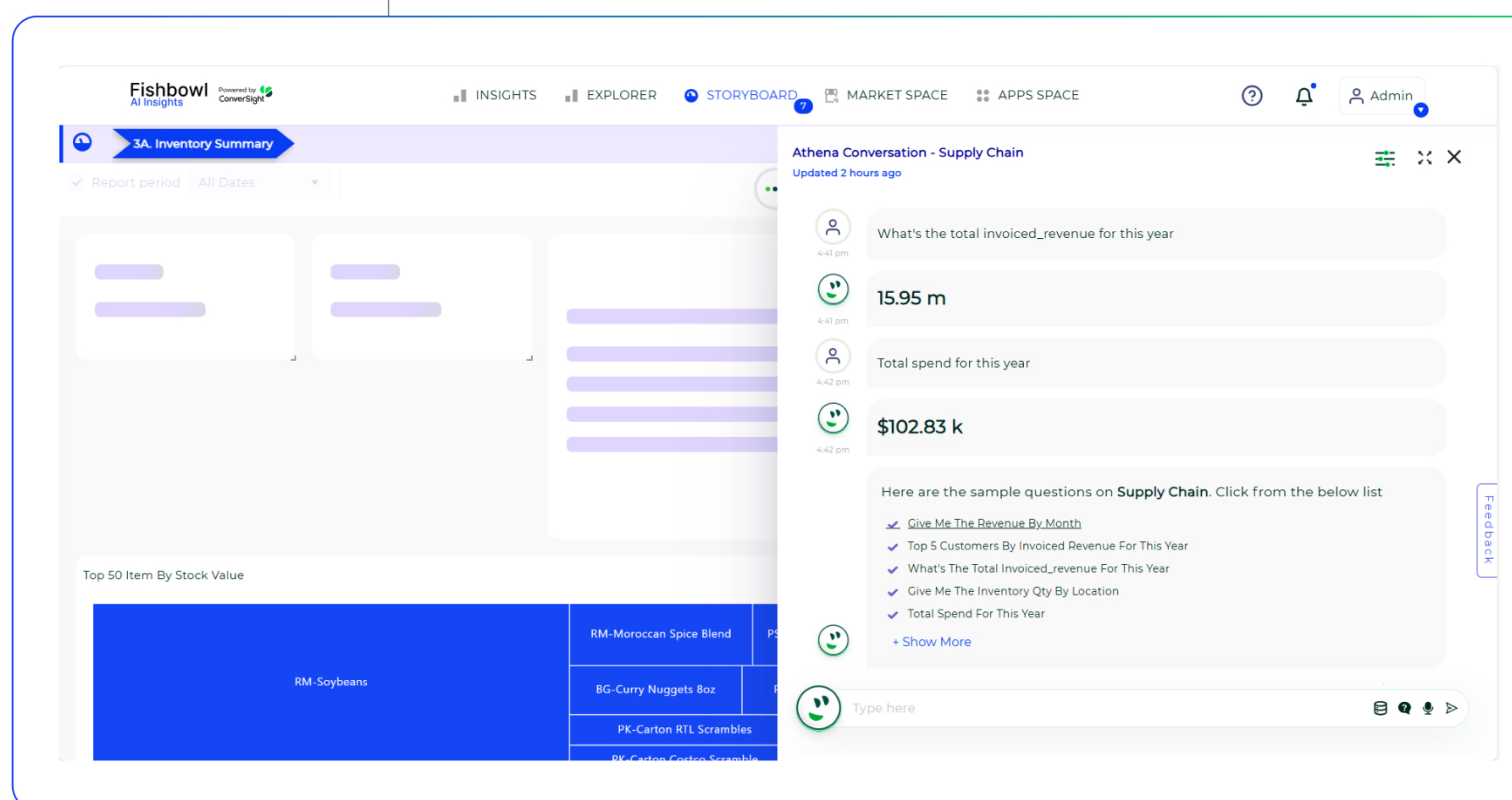
Cross-Platform Integration: Include data from connected systems like CRMs, e-commerce platforms or ERP tools.





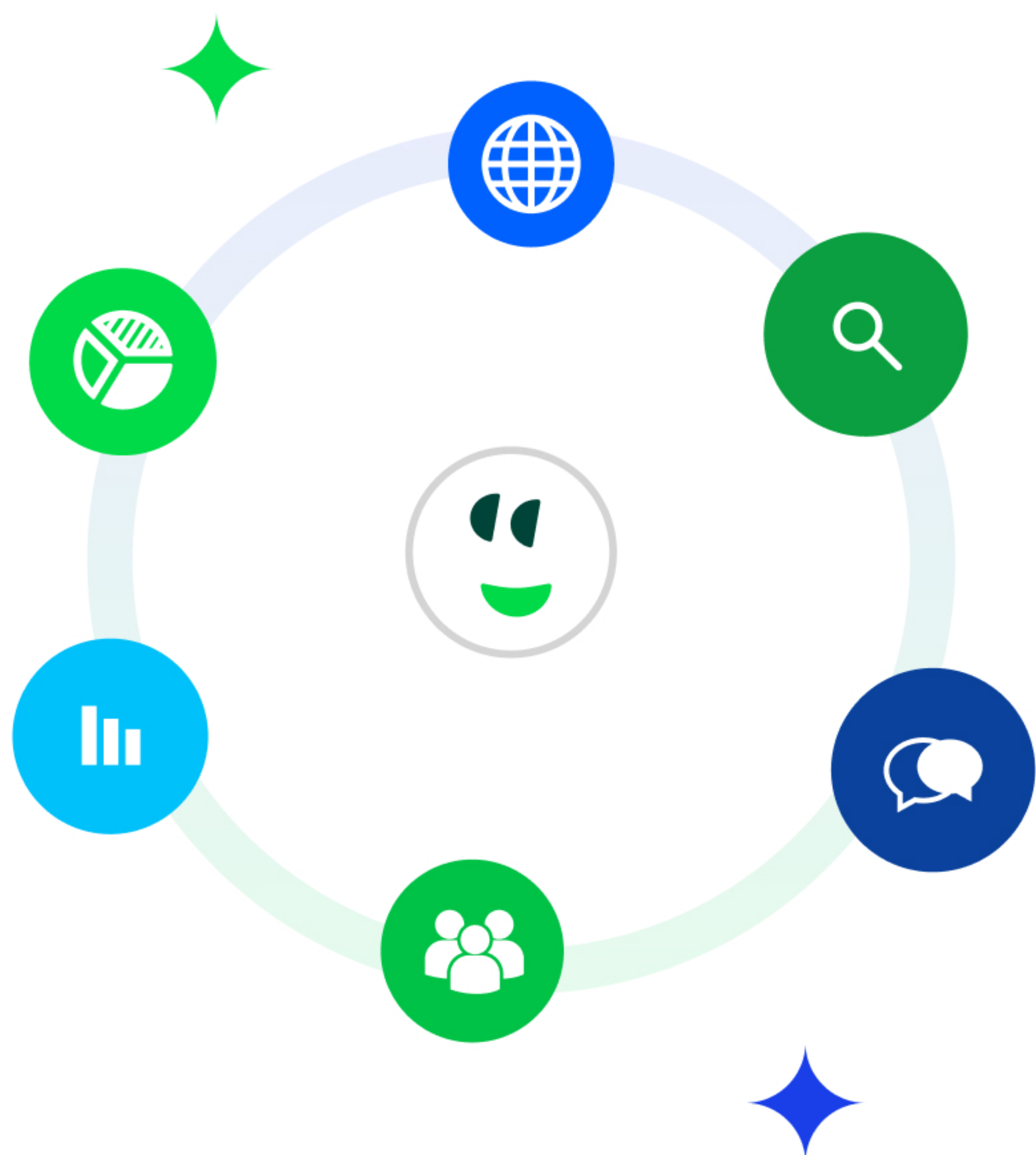
2.6. Ask Athena - Instant Business Insights

With ConverSight's Conversational AI assistant, Athena, users can interact conversationally to get answers to their business queries in seconds. Simply type or speak your question—such as “What’s my current stock for product X?” or “What’s my top-performing product of this month?” and Athena will deliver precise, actionable insights instantly. It’s like having a business analyst available 24/7!



3. Real-World Benefits of ConverSight for Fishbowl Users

Here’s what Fishbowl users can achieve with ConverSight integration:



Smarter Decisions: Identify trends, bottlenecks and opportunities at a glance. Make decisions backed by real-time data and AI-driven recommendations.

Proactive Planning: Prepare for seasonal spikes or unexpected demand surges. Reduce stockouts and overstocking through accurate forecasting.

Streamlined Operations: Automate routine tasks like reporting and KPI monitoring. Free up valuable time for strategic activities.

Faster ROI: Improve cash flow by optimizing inventory turnover and enhancing customer satisfaction with better stock availability.

4. How to Get Started

Step 1: Connect with ConverSight

Schedule a consultation to discuss your specific challenges and goals. Our experts will guide you on how ConverSight can align with your Fishbowl system.

Step 2: Seamless Integration

Our team ensures a smooth, hassle-free integration process. Fishbowl data will be synced with ConverSight to start delivering insights immediately.

Step 3: Activate Pre-Configured Tools

Leverage storyboards, KPIs and forecasting tools out of the box. Start optimizing your operations from day one with minimal setup required.

Step 4: Activate Pre-Configured Tools

Leverage storyboards, KPIs and forecasting tools out of the box. Start optimizing your operations from day one with minimal setup required.

5. Conclusion

ConverSight doesn’t just enhance Fishbowl—it transforms it. By integrating the two, businesses gain unmatched visibility, intelligence and automation. From smarter forecasting to hands-free reporting, ConverSight empowers Fishbowl users to achieve operational excellence. Ready to get started? Let ConverSight help you unlock your Fishbowl’s full potential. Visit ConverSight.ai or [book a demo with us!](#)

Join our customers who have
accelerated growth with ConverSight



About ConverSight

ConverSight's Adaptive Analytics platform uses conversational AI, Natural Language Processing and machine learning to converge the distance between humans and data through data stories, presenting the meaning of data in the most effective, personalized and efficient form possible. ConverSight's patented AI business assistant, Athena, connects distributed databases to answer questions and Augment the consumers through 4 key functions: Information on demand, Automated Story Telling, Proactive Insights, and Recommended Actions.

For more information, visit www.conversight.ai

