



Extending Acumatica GIs with AI

Supply Chain Visibility for Acumatica

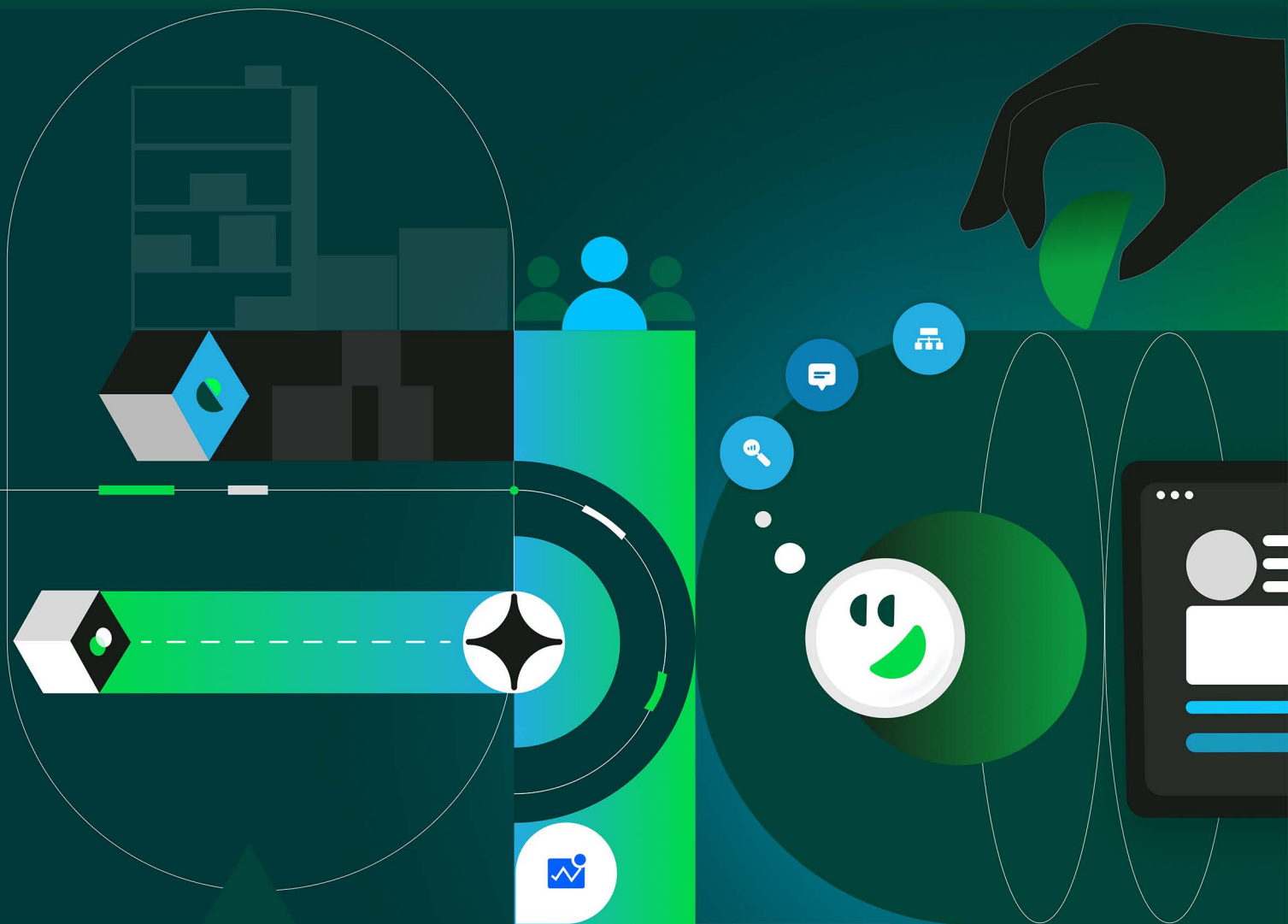




Table of Contents

1. Introduction	02
2. The Acumatica Landscape for Mid-Sized Businesses	02
3. Where ConverSight's AI, Athena, Extends the Power of Acumatica GIs	03
4. How ConverSight Extends Acumatica for Supply Chain Visibility	04
5. How ConverSight Benefits Acumatica Users	05
6. Conclusion	06



1. Bridging the Gap Between ERP Data and Decision-Making

Acumatica Cloud ERP's Generic Inquiries (GIs) provide a powerful, flexible foundation for data management — giving businesses a proven framework to query, organize, and report on the information that drives daily operations. As a trusted cloud ERP, Acumatica equips organizations with the structured data layer they need to run their business with confidence.

ConverSight, a decision intelligence platform with Agentic AI foundation, brings collaborative and self-service analytics for actionable insights. ConverSight's Supply Chain Visibility solution extends the value of Acumatica GIs with self-service reporting, drag-and-drop data exploration, and conversational analytics — helping Acumatica users get even more from the investment they have already made.

ConverSight is a Proud Acumatica Technology Partner

Working closely with Acumatica and its VAR network — including Net at Work, DSD, and Practical Software — to extend Acumatica's value with AI Supply Chain Visibility.

This whitepaper highlights how ConverSight complements Acumatica to simplify inventory and supply chain visibility — making it easier than ever to harness Acumatica data, drive efficiency and agility, and enable smarter decisions across the business.

2. The Acumatica Landscape for Mid-Sized Businesses

Across industries, mid-sized organizations are choosing Acumatica Cloud ERP to centralize their data and standardize their operations. Acumatica has emerged as a leading cloud ERP for these businesses, providing the structured workflows and reporting tools that put accurate information at users' fingertips. As Acumatica customers continue to mature in their use of the platform, many are looking to extend it with AI and self-service analytics — turning the data Acumatica already collects into faster, clearer, and more accessible decisions across the supply chain. ConverSight, as an Acumatica Technology Partner, brings that AI layer directly to Acumatica users.

Acumatica customers extending their platform with ConverSight's Agentic Decision Intelligence move from static reporting to faster decisions, coordinated actions and continuously improving supply chain operations.

— Industry Perspective

- 70% of Acumatica users are exploring ways to extend their platform with AI and self-service tools, particularly around reporting capabilities like Generic Inquiries, which are central to data retrieval and reporting in Acumatica.
- Industries such as manufacturing, retail, and distribution — core Acumatica verticals — are leading adopters of Acumatica-extending technologies, as they manage large data volumes and complex workflows where self-service visibility delivers immediate value.
- According to industry research, 64% of supply chain organizations are prioritizing visibility as a top investment area — making AI-extended Acumatica a natural next step in their digital transformation.

Manufacturing, retail, distribution, and supply chain — all strong Acumatica verticals — involve large data volumes, complex workflows, and frequent product or inventory changes. These are exactly the environments where extending Acumatica with self-service analytics delivers the greatest impact. Technology, healthcare, and wholesale leaders running Acumatica are increasingly pairing it with AI-driven visibility tools to simplify reporting workflows and accelerate decision-making.

3. Where ConverSight's AI, Athena, Extends the Power of Acumatica GIs

Acumatica's Generic Inquiries (GIs) deliver a flexible, dependable framework for extracting, organizing, and analyzing data within Acumatica. They give users a strong foundation for querying critical business metrics and informed decision-making. ConverSight, working as an Acumatica Technology Partner, extends that foundation in four key ways, unlocking even more value from Acumatica GIs:

1. Self-Service Report Building

Acumatica GIs offer deep configurability for technical users. ConverSight extends that power to business users with the Explorer — a drag-and-drop interface for building reports on Acumatica data without Acumatica VAR or IT involvement.

2. Natural-Language Analytics

Acumatica GIs give users a structured query environment. ConverSight extends data access to every Acumatica user with Athena Explorer — letting teams ask questions in plain language and get answers instantly.

3. Unified Supply Chain Visibility

Acumatica GIs provide a robust foundation of internal Acumatica data. ConverSight extends visibility across the supply chain — bringing Acumatica data together with adjacent sources into a single view.

4. Personalized Storyboards & Alerts

Acumatica GIs deliver dependable, structured reporting. ConverSight extends those views with customizable storyboards and threshold-based alerts on Acumatica data, tailored to each role on the team.

4. How ConverSight Extends Acumatica for Supply Chain Visibility

As an Acumatica Technology Partner, ConverSight integrates directly with Acumatica to extend the capabilities of Generic Inquiries. The Supply Chain Visibility solution transforms structured Acumatica data into clear, accessible insights, giving Acumatica users a daily-refreshed, unified view of supply chain performance. Here is how ConverSight builds on Acumatica's data foundation:

1. Daily Refreshed Reporting on Acumatica Data

Acumatica GIs give users a powerful framework for generating accurate, structured reports. ConverSight complements this by bringing Acumatica data into a unified analytics layer that refreshes daily — so teams start each day with a consistent, organization-wide view of supply chain performance. Together, Acumatica and ConverSight ensure users have both the rigor of GI reporting in Acumatica and a single, dependable daily snapshot for cross-functional analysis.

2. Self-Service Report Building with Explorer

Acumatica GIs offer deep configurability for technical Acumatica users who understand the platform's data model. ConverSight extends that power to business users with the Explorer — a self-service environment where teams build their own reports on Acumatica data through a simple drag-and-drop interface. Users select the columns and fields they need, group and filter on the fly, and produce the views that matter most to their work, all without writing queries or relying on their Acumatica VAR for custom report development. By using Explorer on Acumatica's structured data, ConverSight makes report building accessible to anyone in the organization — from supply chain analysts to operations leaders — while preserving the integrity of the GIs and data model that Acumatica provides.

3. Conversational AI with Athena Explorer

Acumatica GIs give technical users a powerful query environment. ConverSight extends data accessibility to every Acumatica user with Athena Explorer, its conversational AI assistant. Athena Explorer allows team members to ask questions in natural language and receive instant, accurate answers to questions like, **"What is the status of my inventory?"** or **"Which products are underperforming?"** — drawing directly on the structured data Acumatica already provides. By combining natural-language Q&A with the drag-and-drop Explorer, Athena Explorer makes Acumatica data interaction effortless. Decision-makers get answers quickly, without needing to navigate multiple Acumatica screens or write technical queries — and the structured reports built in Acumatica remain the system of record.

4. Threshold-Based Alerts and Notifications

Acumatica GIs deliver dependable, structured views of business data. ConverSight extends those views with customizable alerts that notify users when significant changes occur in the daily Acumatica data refresh. Users can set alerts to monitor inventory levels, sales trends, customer satisfaction scores, or cash flow drawn from Acumatica. When a metric crosses a preset threshold — such as an inventory shortage or a drop in sales — ConverSight notifies the right people automatically. These alerts ensure that decision-makers are always aware of critical developments and can respond through their existing Acumatica workflows. This proactive layer on top of Acumatica helps prevent issues from escalating, minimizes risk, and ensures teams can act quickly to address operational challenges.

5. Unified Supply Chain Data Access

Acumatica organizes data into well-defined modules, giving teams structured access to the information they need. ConverSight extends that structure with a unified analytics layer that brings together Acumatica data and complementary supply chain sources — like CRM, e-commerce, and logistics platforms — into a single view of key business metrics, with Acumatica remaining the system of record. By consolidating data points in one place, ConverSight extends the reach of Acumatica into adjacent systems, saving time and ensuring users work with a comprehensive, holistic view of operations. This streamlined access enables more informed decisions without disrupting the Acumatica workflows your team relies on.

6. Customizable Dashboards and Reports on Acumatica Data

Acumatica delivers a strong set of standard reports and dashboards that meet a wide range of business needs. ConverSight extends those capabilities with fully customizable dashboards that can be tailored to the unique needs of each Acumatica user or team. Whether tracking inventory levels, sales performance, or supplier metrics, users can design their dashboards to display the metrics most relevant to their roles — all powered by Acumatica data. Customizable dashboards let users focus on what matters most to their responsibilities, increasing efficiency. Custom reports can also be scheduled and delivered automatically, ensuring stakeholders receive the Acumatica insights they need on time, every time.

7. Simplified User Experience for Acumatica Users

Acumatica GIs offer the depth and flexibility that technical users value. ConverSight extends that depth to non-technical Acumatica users with an intuitive interface and user-friendly features. Whether building a report in Explorer, asking a question through Athena Explorer, or customizing a storyboard, ConverSight ensures users at all levels of technical ability can easily interact with Acumatica data. An intuitive interface allows employees across the organization — regardless of technical expertise — to easily access and analyze their Acumatica data. This reduces training effort and helps teams make informed decisions without a steep learning curve.

5. How ConverSight Benefits Acumatica Users

- 🌱 **Complement Custom GIs with Self-Service:** ConverSight works alongside existing Acumatica Generic Inquiries, giving business users a drag-and-drop Explorer to build their own reports while the GIs you have already built continue to serve as a trusted Acumatica foundation.
- 🌱 **Decisions on a Consistent Daily View:** Access a unified, daily-refreshed view of Acumatica supply chain data and make informed decisions with confidence — built on the trusted data foundation Acumatica provides.
- 🌱 **Effortless Inventory Visibility:** From tracking stock levels to monitoring supplier performance, ConverSight extends Acumatica's inventory capabilities into a clear, organization-wide view of the supply chain.
- 🌱 **Stay Ahead with Smart Alerts:** Threshold-based alerts keep teams informed of potential challenges in Acumatica data, ensuring they are always prepared to act on changes as the daily refresh surfaces them.
- 🌱 **AI for Every Acumatica User:** With Athena Explorer, ConverSight's conversational AI, every team member can ask questions of Acumatica data in plain language and make smart decisions without needing deep technical expertise.
- 🌱 **Backed by the Acumatica Partner Ecosystem:** As an Acumatica Technology Partner, ConverSight works closely with the Acumatica VAR network — including Net at Work, DSD, and Practical Software — to ensure smooth implementation and ongoing support for your Acumatica environment.

6. Conclusion

The combination of Acumatica Cloud ERP and ConverSight's Supply Chain Visibility solution transforms how businesses access and use their Acumatica data. By extending Generic Inquiries with self-service Explorer and natural-language Athena Explorer, ConverSight empowers Acumatica users to build on their existing investment — enabling clearer visibility, easier reporting, and faster decisions across the supply chain. As an Acumatica Technology Partner, ConverSight is committed to helping Acumatica customers and the Acumatica VAR community get even more value from the platform. Unlock the full potential of your Acumatica data and gain a competitive edge with ConverSight — where Acumatica's operational excellence meets AI supply chain visibility. Take the next step today. Book your personalized [Demo now!](#)

Join our customers who have accelerated growth with ConverSight



About ConverSight

ConverSight is the category creator in Unified Decision Intelligence. Bringing together generative AI and advanced analytics without the traditional complexity of data science in one unified platform, so businesses can make better decisions. ConverSight's unified decision intelligence platform provides AI-powered instant custom reporting, demand forecasting, and inventory optimization using seamlessly integrated data from Acumatica and other business tools. ConverSight is an Acumatica partner, working closely with Acumatica Value Added Resellers (VARs), like at Net at Work, DSD, and Practical Software. ConverSight was named a Gartner Cool Vendor, Supply & Demand Chain Executive (SDCE) Top Software and Technology Solution 2024, and winner of the 2024 AI Breakthrough Award. Connect with ConverSight on LinkedIn, Instagram, Facebook, Youtube, tune in to the Data Insights Podcast, or visit www.conversight.ai to learn more.

